

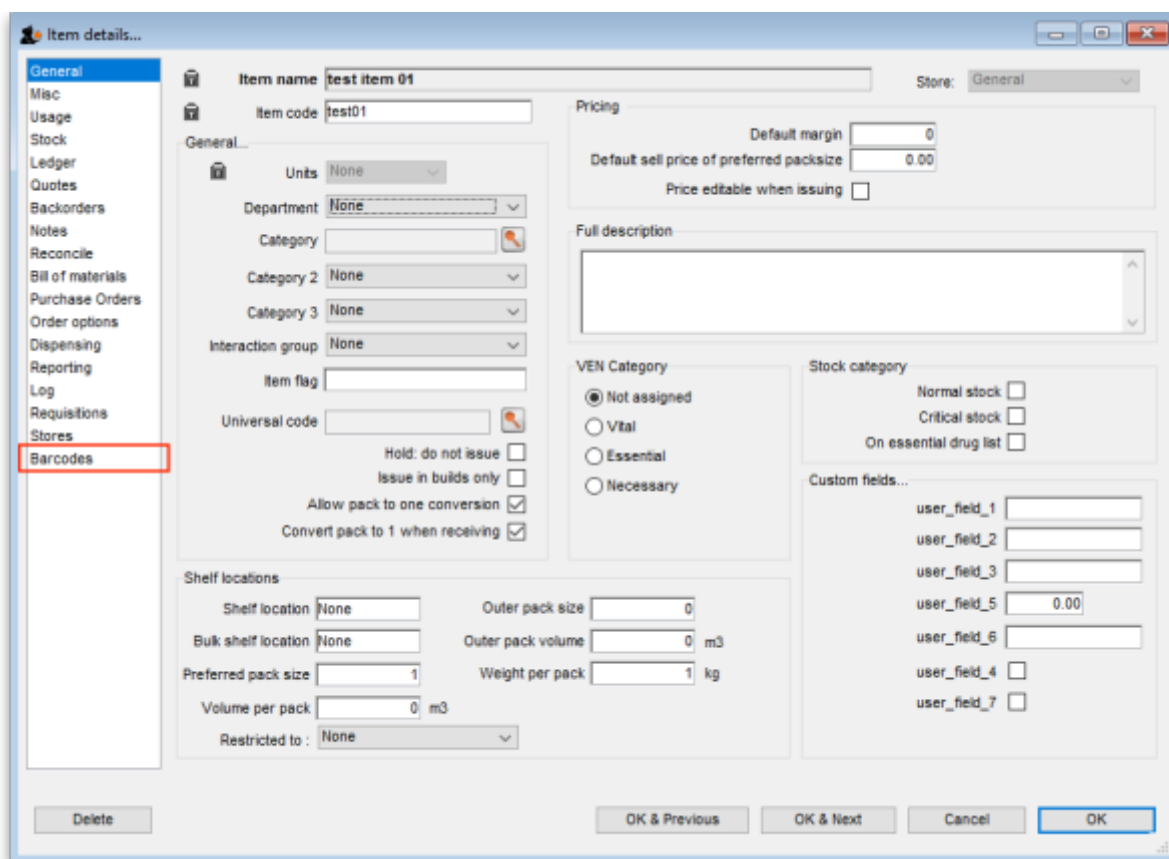
15.02. Adding barcodes to items

Added: Version 4.01

Assigning barcodes to items is an important setup activity. It is this step that enables mSupply to recognise which item a particular barcode belongs to. **Note:** this is strictly assigning the **GTIN** to an item, not the rest of the barcode which includes things like batch, expiry, serial number etc.

You can add barcodes to items before or during the goods receipt process. The process described here is used for both - to see how the goods receipt process fits in, see [Barcode scanning and receiving goods](#).

To start the process, view the details page of the item you want to add barcodes to (go to *Item > Show items...*, click on the *OK* button, double-click on the item you want in the list). Then click on the Barcodes tab on the left hand side of the details window:



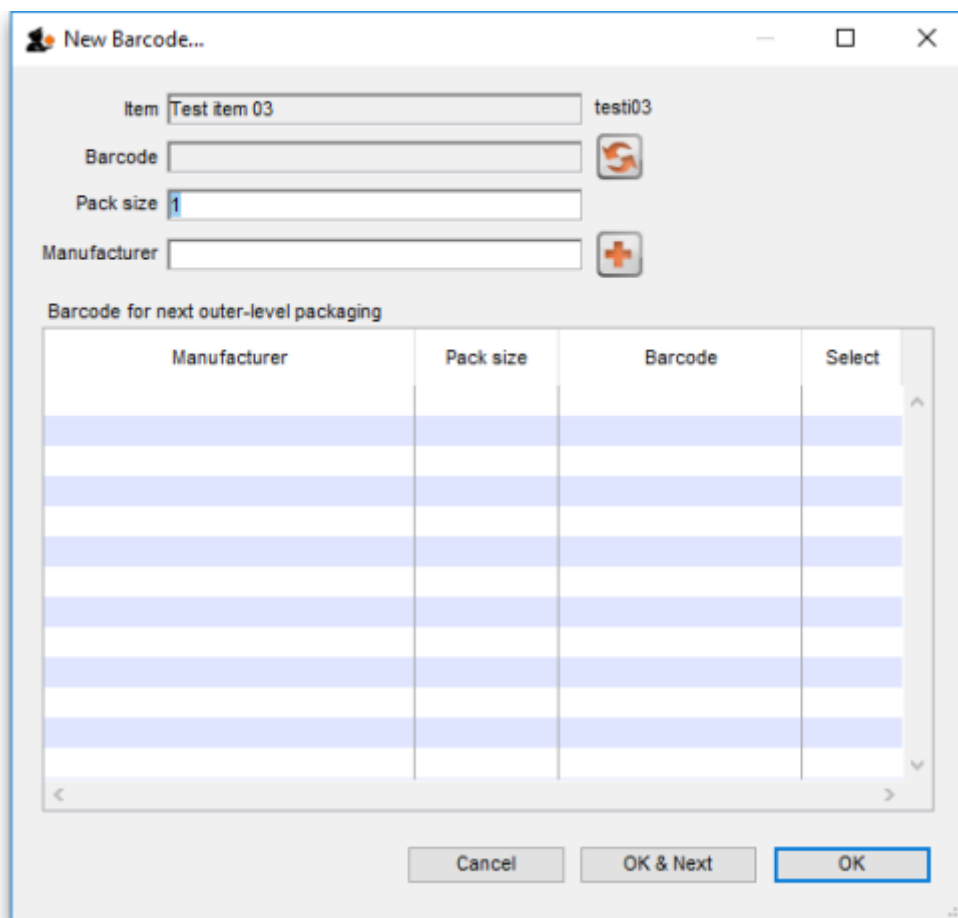
This will show you a list of the current barcodes assigned to the item:

Editing a barcode

To edit a barcode, simply double-click it in the table. This will open the 'add a barcode' window shown in the *Adding a barcode* section below but the window will be populated with the barcode's details. Simply edit the details as described in the *Adding a barcode* section. Please note that, if a barcode has already been assigned to stock, you will not be able to edit the pack size or the barcode itself.

Adding a barcode

To add a barcode to the item, click on the *Add* button. This window appears:




Item: this is the name of the item you're adding a barcode to, followed by its code. It is non-editable

Barcode: the human-readable form of the barcode; the 2 or 3 digit type identifier followed by the 14 digit GTIN only (it could be a 13 or 8 digit (or any length!) GTIN but it must be padded with leading zeros to 14 digits in total). You can't type anything in here, you have two options:

- Scan the item's barcode with a barcode scanner - the barcode's identifier and GTIN will appear in the textbox. If the barcode is not GS1 compliant you will see a warning message and you will not be able to save the barcode (just in case you've scanned the wrong thing. Why would anyone go wild with a scanner and start scanning anything they can find? 😊)
- Click on the 🔄 icon next to the Barcode field to have mSupply supply its own unique, internal

GS1 compliant barcode. Each time you click on the icon, mSupply will supply a new barcode.

Pack size: the pack size (number of individual items in one pack) that this barcode belongs to

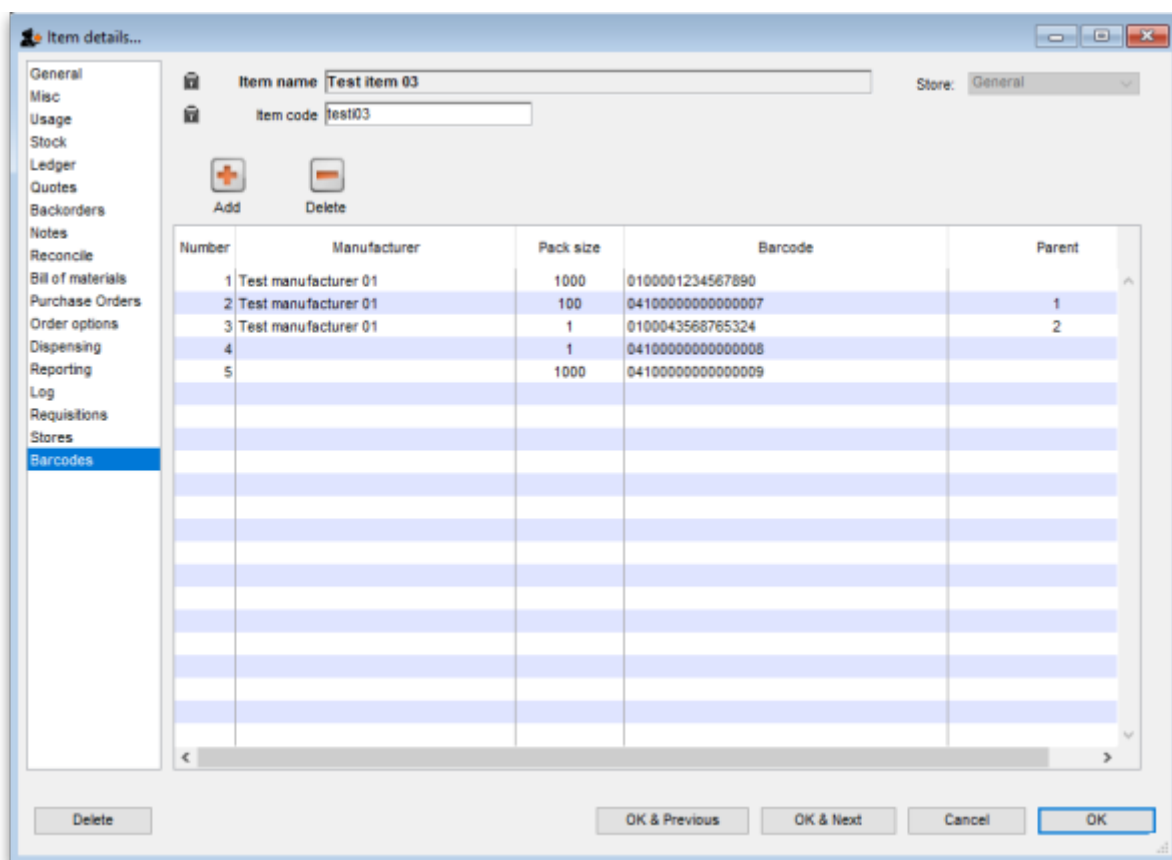
Manufacturer: the manufacturer that this barcode belongs to. Type the first few characters of the manufacturer's name and press the Tab key to select it from a list of matching names. If the manufacturer you want doesn't exist in mSupply, click on the  button next to the manufacturer field to add it.

Barcode for next outer-level packaging table: this is where you select the barcode that is the 'parent' of this one i.e. the one with the next biggest pack size. Selecting one is optional but it allows mSupply to identify barcodes that should go on tertiary level packaging (they can have different printing requirements). The table will show all the other barcodes entered for this item. To select the parent, simply click on the checkbox in the *Select* column to check it.



GS1 barcodes are unique to the combination of item, pack size and manufacturer. So you won't be able to add 2 barcodes to the same item with the same pack size and manufacturer.

Here is an example of an item with several barcodes added:



The screenshot shows the 'Item details...' window for 'Test item 03'. The 'Barcodes' tab is selected in the left-hand menu. The main area displays a table with the following data:

Number	Manufacturer	Pack size	Barcode	Parent
1	Test manufacturer 01	1000	0100001234567890	
2	Test manufacturer 01	100	041000000000000007	1
3	Test manufacturer 01	1	0100043568765324	2
4		1	041000000000000008	
5		1000	041000000000000009	

From:

<https://docs.msupply.org.nz/docs/> - **mSupply documentation wiki**

Permanent link:

https://docs.msupply.org.nz/docs/barcode_scanning:adding_barcodes_to_items?rev=1654161024

Last update: **2022/06/02 09:10**

