

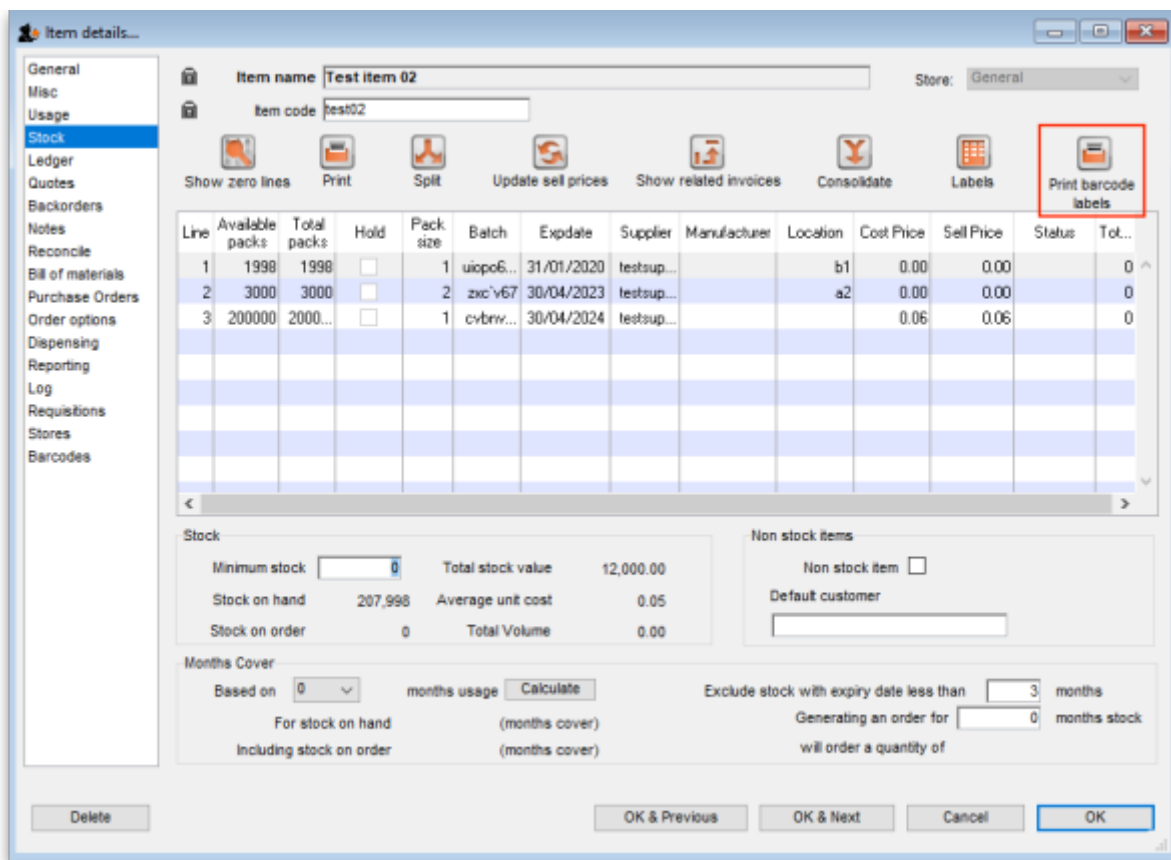
# Barcode label printing

Added: Version 4.01

You might want to print barcode labels for your stock if an existing label is damaged, if you break a box down into smaller pack sizes and the contents don't have individual GS1 barcodes or if some stock comes into your warehouses and it doesn't have valid GS1 barcodes on it.

There are several places in mSupply where you can print barcode labels for your stock.

## Item details page

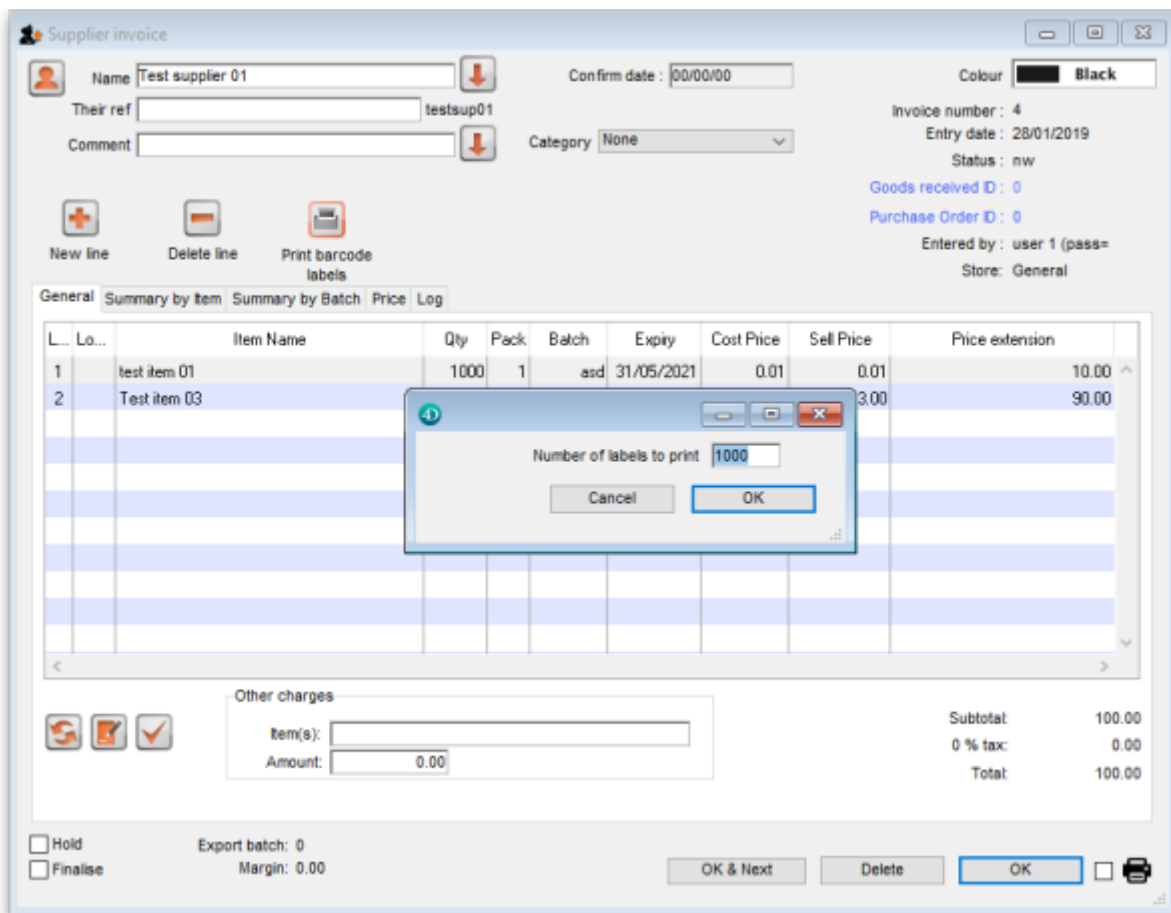
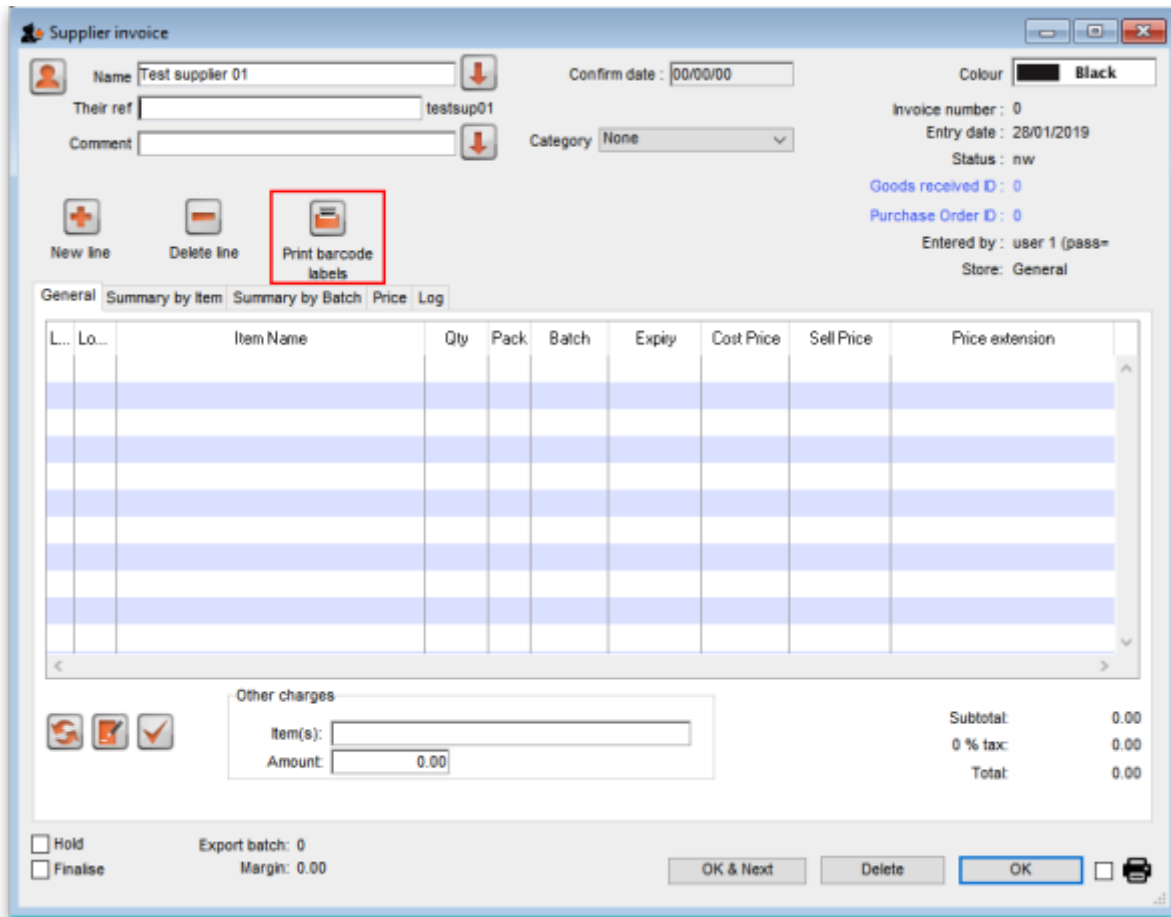


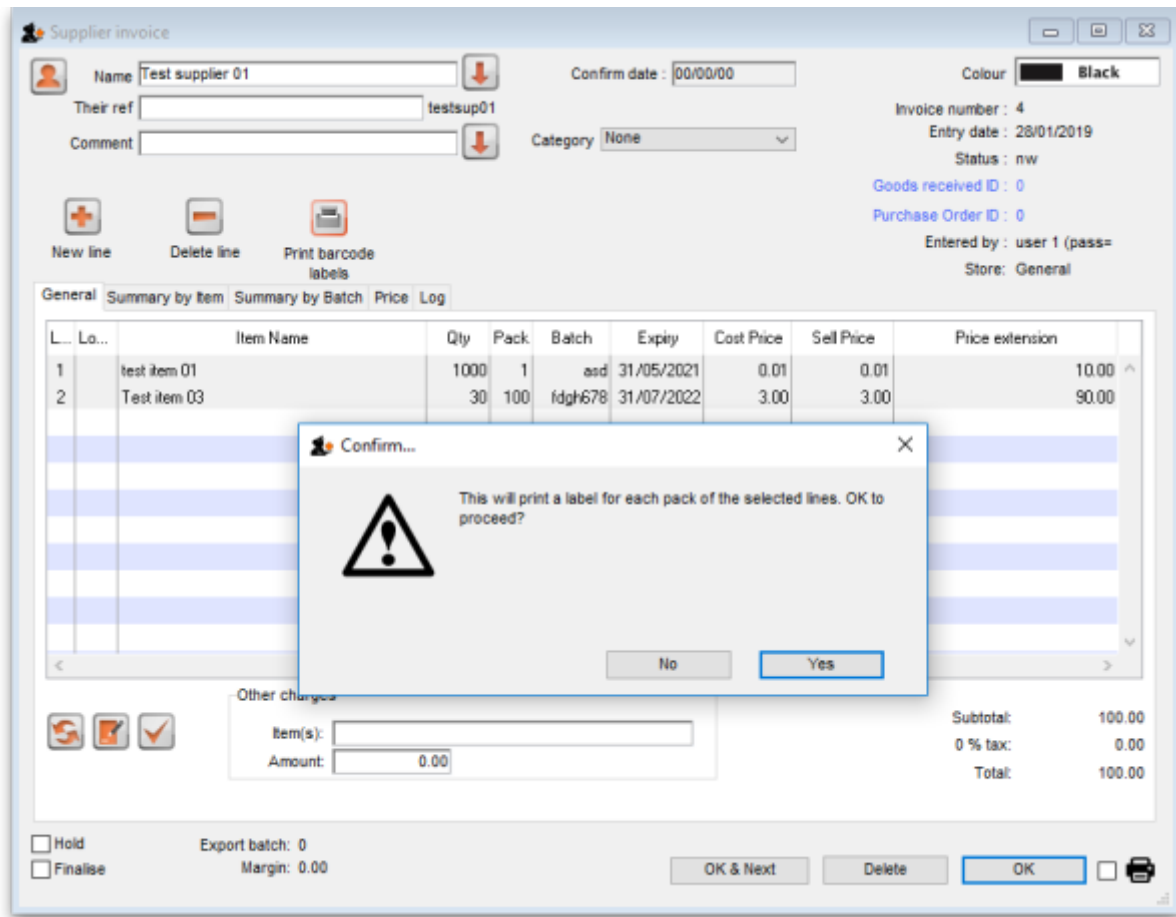
The screenshot shows the 'Item details...' window in a software application. The 'Stock' tab is selected in the left-hand menu. The main area displays a table with the following data:

Line	Available packs	Total packs	Hold	Pack size	Batch	Expdate	Supplier	Manufacturer	Location	Cost Price	Sell Price	Status	Tot...
1	1998	1998	<input type="checkbox"/>	1	uicpo6...	31/01/2020	testsup...		b1	0.00	0.00		0
2	3000	3000	<input type="checkbox"/>	2	zxc'v67	30/04/2023	testsup...		a2	0.00	0.00		0
3	200000	2000...	<input type="checkbox"/>	1	cvbrv...	30/04/2024	testsup...			0.06	0.06		0

A dialog box titled 'Number of labels to print' is overlaid on the table, with the value '1998' entered in the input field. Below the table, there are sections for 'Stock' (Minimum stock: 0, Stock on hand: 207,998, Stock on order: 0) and 'Non stock items' (Non stock item: , Default customer: ). The 'Months Cover' section shows 'Based on 0 months usage' and 'Exclude stock with expiry date less than 3 months'. At the bottom, there are buttons for 'Delete', 'OK & Previous', 'OK & Next', 'Cancel', and 'OK'.

## Supplier invoice





## Stock list

Previous: [Pick list checking](#) Next: [Why an HIS module for mSupply?](#)

From: <https://docs.msupply.org.nz/docs/> - mSupply documentation wiki

Permanent link: [https://docs.msupply.org.nz/docs/barcode\\_scanning:barcode\\_label\\_printing?rev=1548696137](https://docs.msupply.org.nz/docs/barcode_scanning:barcode_label_printing?rev=1548696137)

Last update: 2019/01/28 17:22

