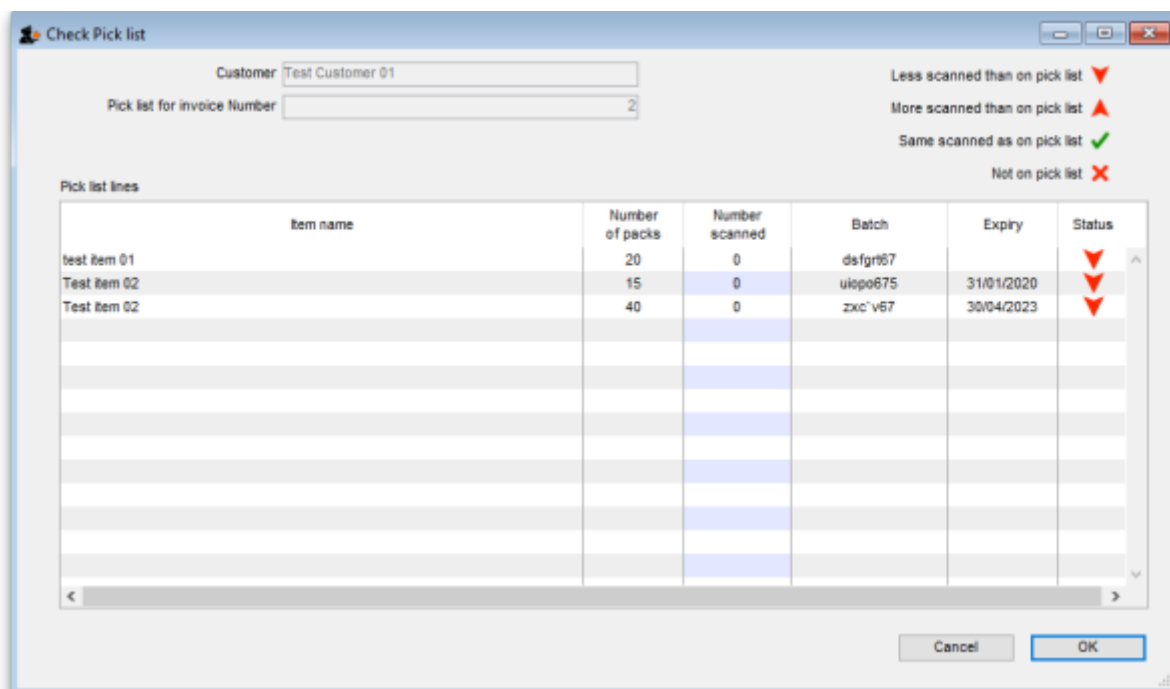
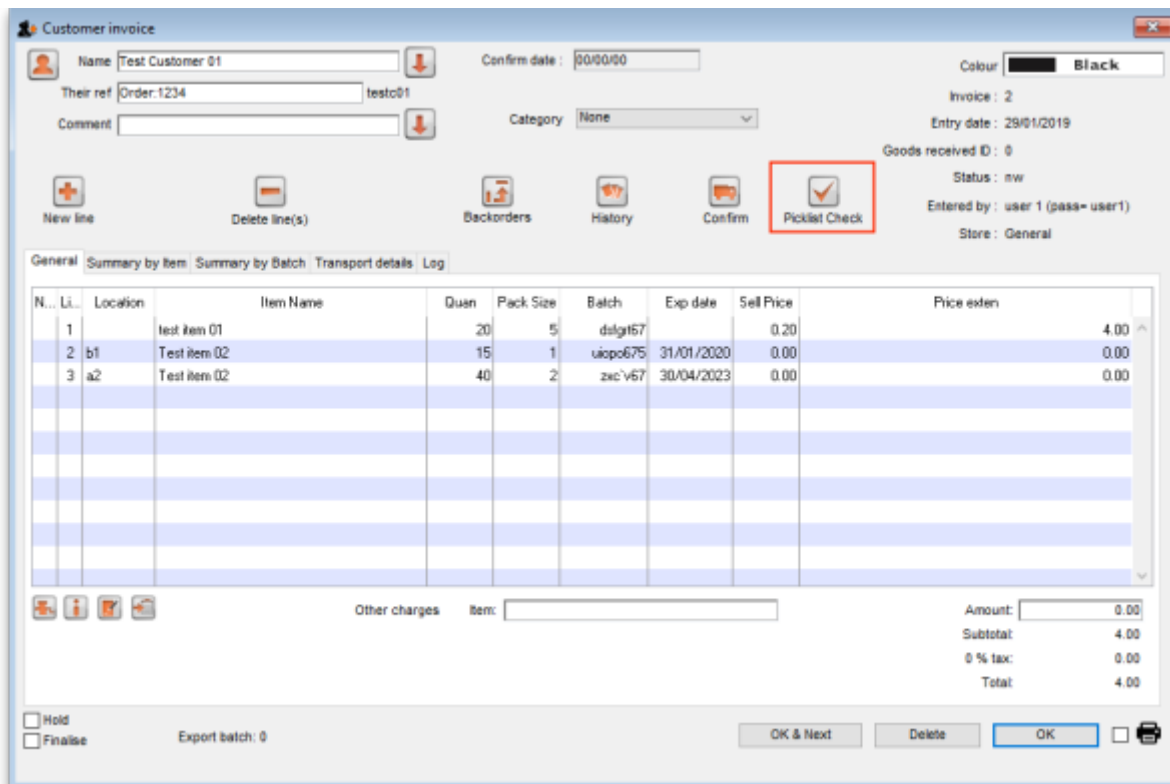


# Barcode scanning and pick list checking

Added: Version 4.01

Another way barcode scanning can be useful is in checking that goods picked off the shelf for distribution to a customer match what was on the pick list.



Previous: [Barcode scanning and stocktaking](#) Next: [Barcode label printing](#)

Last update:  
2019/01/29 15:03

barcode\_scanning:pick\_checking [https://docs.msupply.org.nz/docs/barcode\\_scanning:pick\\_checking?rev=1548774227](https://docs.msupply.org.nz/docs/barcode_scanning:pick_checking?rev=1548774227)

From:

<https://docs.msupply.org.nz/docs/> - **mSupply documentation wiki**

Permanent link:

[https://docs.msupply.org.nz/docs/barcode\\_scanning:pick\\_checking?rev=1548774227](https://docs.msupply.org.nz/docs/barcode_scanning:pick_checking?rev=1548774227)

Last update: **2019/01/29 15:03**

