

10.08. Patient medication records

Added: Version 3.11

Introduction

A Patient Medication Record (PMR) is a way of recording all the medications a person is using, whether or not they were dispensed by you. The record contains useful information for the patient such as

- The dosage in a clear easy-to-understand format.
- An (optional) picture of the dose form (tablet, capsule, etc)
- The medication's purpose.
- Common instructions for taking/using the medicine, which may be customised for each patient

Setting up items

Before adding items it is good to set up the standard purpose, instructions and item photo for common items at least. Once set up, you can add these to a particular patient's PMR with just the click of a button.

1. Find the item you are interested in and go to the dispensing tab

Item details...

Item name: GLIBENCLAMIDE SMG TAB

Store: Dispensary

Default Directions

Priority	Directi
1	2t bd pc uat
2	1t bd pc uat
3	1t od pc uat

Medication Purpose

To control blood sugar

Patient instructions

Take this medicine immediately after food.

Picture


Warn if user tries to issue more than:

Print out the units for this item on labels: This option has been disabled as you have choosen to 'Always print item units' in the mSupply preferences.

Buttons: Delete, OK & Previous, OK & Next, Cancel, OK

- 2.
3. Enter purpose and instructions. Both these fields can take as much text as you wish to enter.
4. Add a photo by either dragging a photo from another application or pasting a photo from the clipboard.

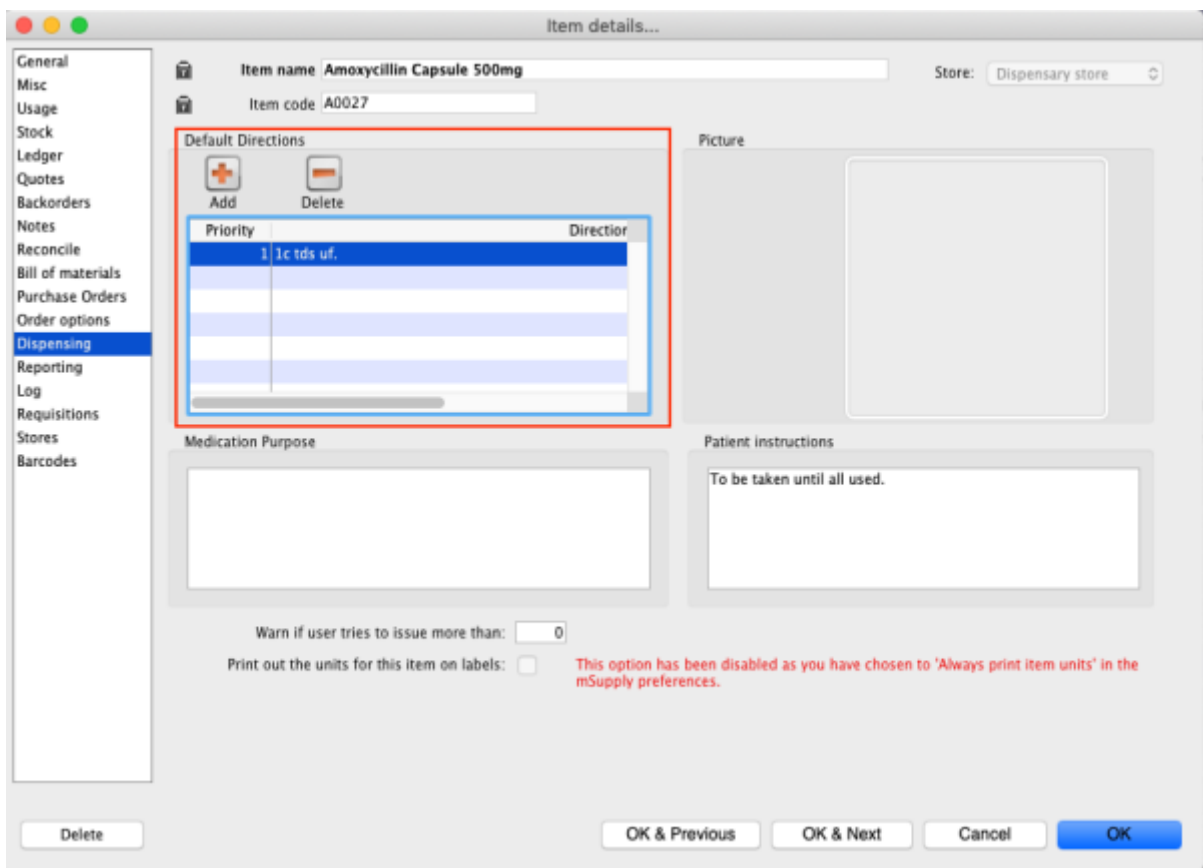


 mSupply will automatically resize large photos when you add them- there is no need to resize photos yourself first.

Default direction

On the default direction list, you can add a combination of abbreviation which can be used to fill in the direction while issuing drugs to patients.

To set up abbreviation, view [10.05. Abbreviations for dispensing](#)



Add This is to add default directions. You may combine multiple abbreviation code to make up a sentence. You may even add a full sentence.

Delete This is to delete direction.

Direction for items that were added above will be available when dispensing to patients.

The screenshot shows the 'Add item...' dialog box. At the top, the item name is 'Amoxicillin Capsule 500mg' and the code is 'A0027'. Below this, there are fields for 'Line' (2), 'Quan' (0 of 8895), 'Pack' (1 cap.), and 'Bulk/Outer pack size' (0). A 'Repeats' section includes 'Total' (0), 'Repeat left' (0), and 'Expiry date' (24/11/2019). A table below shows the inventory lines:

Line	Issue	Available	Tot in st...	Pack	Hold	Batch	Expdate	Supplier	Location	Cost Price	Sell price	Sta
1	0	0	15	1	<input type="checkbox"/>	TN180721	01/01/2019			0.00	0.00	
2	0	8895	8895	1	<input type="checkbox"/>	NL2591	30/11/2020	invad		0.00	0.00	

Below the table, there are summary statistics: 'Total quantity issued' (0) and 'Total quantity available' (8895). The 'Directions' section has an 'Abbreviation' field with '1c tds uf.' and a dropdown menu showing '✓ 1c tds uf.'. The 'Expanded directions' field contains the text: 'Take ONE capsule THREE(3) times a day until finished. |'. At the bottom, there are buttons for 'Cancel', 'OK', and 'OK & Next'.

Note the Drop down list will now be populated by the default directions. Once a direction is chosen, mSupply will expand valid abbreviation to sentences. It is possible to have more than one set of direction as options.

Adding items to a Patient's PMR

There are 2 ways of adding items to a PMR

- From the patient history tab:
 - Highlight the items from the patient's history you wish to add, then click the **Add to PMR** button.
 - The record will be shown on the "PMR" tab if you switch to it.
 - Note that on the PMR tab you still have to double-click on the added record and fill in the dose, instructions etc.
- From the Patient details PMR tab
 - Here you can add any item that is in the mSupply catalogue.
 - For example, a patient might be regularly taking paracetamol or aspirin that they buy themselves. You can add such items here.

Editing a PMR record

To edit a PMR record, double-click the entry you wish to edit, change details, and click **OK** to save the changes and close the window.

Deleting a PMR

To delete a PMR record, highlight the record(s) you wish to delete, then click the **delete** button. (Do be careful- it's not reversible!)

Printing PMRs

Setting up printing preferences

When a PMR is printed, it has a header and footer. These are set up by choosing **File > Preferences** and then clicking the **Patient Medication** tab.



Note that you can style the text in these boxes by selecting text and right-clicking on your highlighted text to get a contextual menu to apply font styles, colour and size.

Printing a PMR

Simply click the **Print** button. Note that you do not have to highlight records- all records will be printed.

Currently we have included a single PMR printing form in mSupply. We are happy to include others- send us your designs.

Previous: [Warnings](#) Next: [Why an HIS module for mSupply?](#)

From: <https://docs.msupply.org.nz/docs/> - **mSupply documentation wiki**

Permanent link: https://docs.msupply.org.nz/docs/dispensing:patient_medication_records?rev=1571249564

Last update: **2019/10/16 18:12**

