

## 10.08. Patient medication records

Added: Version 3.11

### Introduction

A Patient Medication Record (PMR) is a way of recording all the medications a person is using, whether or not they were dispensed by you. The record contains useful information for the patient such as

- The dosage in a clear easy-to-understand format.
- An (optional) picture of the dose form (tablet, capsule, etc)
- The medication's purpose.
- Common instructions for taking/using the medicine, which may be customised for each patient

### Setting up items

Before adding items it is good to set up the standard purpose, instructions and item photo for common items at least. Once set up, you can add these to a particular patient's PMR with just the click of a button.

1. Find the item you are interested in and go to the dispensing tab

Item details...

Item name: GLIBENCLAMIDE SMG TAB

Store: Dispensary

Default Directions

Priority	Directi
1	2t bd pc uat
2	1t bd pc uat
3	1t od pc uat

Picture

Medication Purpose

To control blood sugar

Patient instructions

Take this medicine immediately after food.


Warn if user tries to issue more than:

Print out the units for this item on labels:  This option has been disabled as you have choosen to 'Always print item units' in the mSupply preferences.

Buttons: Delete, OK & Previous, OK & Next, Cancel, OK

- 2.
3. Enter purpose and instructions. Both these fields can take as much text as you wish to enter.
4. Add a photo by either dragging a photo from another application or pasting a photo from the clipboard.

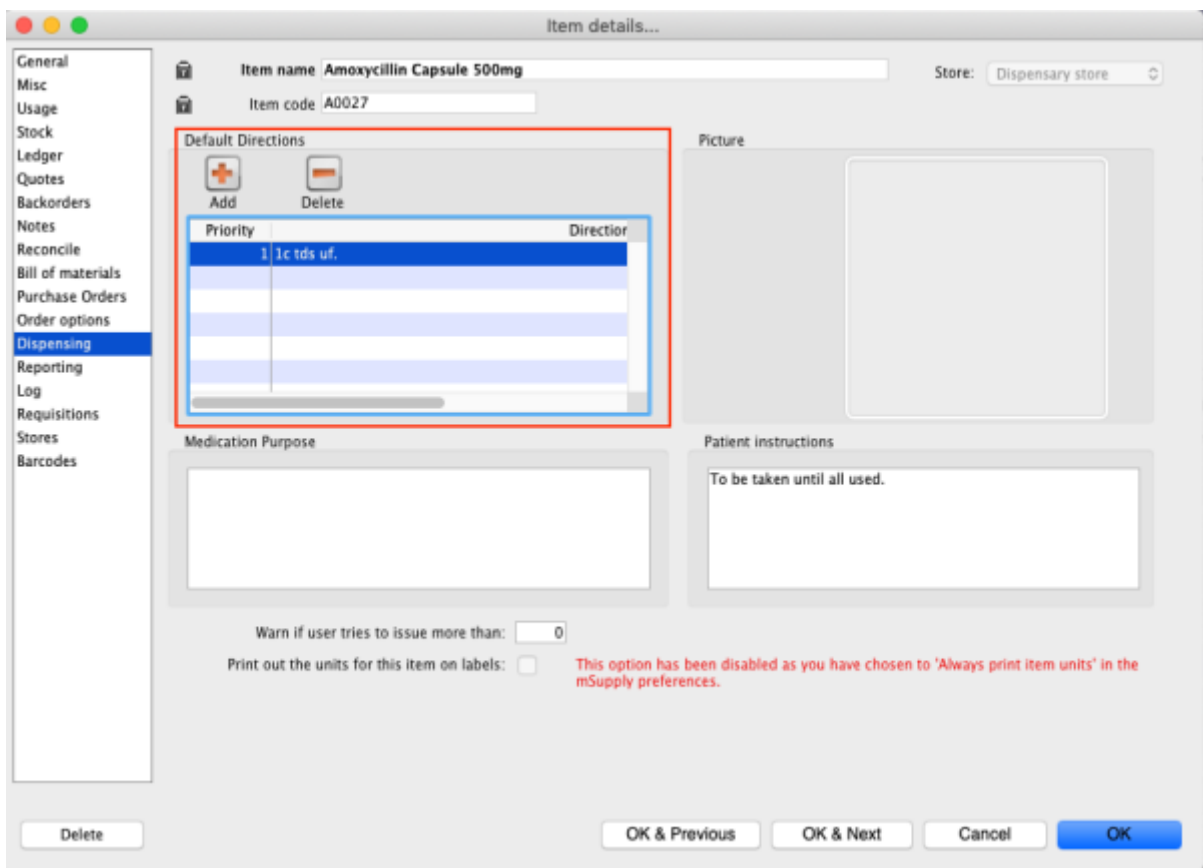


 mSupply will automatically resize large photos when you add them- there is no need to resize photos yourself first.

## Default direction

On the default direction list, you can add a combination of abbreviation which can be used to fill in the direction while issuing drugs to patients.

To set up abbreviation, view [10.05. Abbreviations for dispensing](#)



**Add** This is to add default directions. You may combine multiple abbreviation code to make up a sentence. You may even add a full sentence.

**Delete** This is to delete direction.

Direction for items that were added above will be available when dispensing to patients.





## Editing a PMR entry

To edit a PMR, double-click the entry you wish to edit, change details, and click **OK** to save the changes and close the window.

## Deleting a PMR

To delete a PMR record, highlight the record(s) you wish to delete, then click the **delete** button. (Do be careful- it's not reversible!)

## Printing PMRs

### Setting up printing preferences

When a PMR is printed, it has a header and footer. These are set up by choosing **File > Preferences** and then clicking the **Patient Medication** tab.



Note that you can style the text in these boxes by selecting text and right-clicking on your highlighted text to get a contextual menu to apply font styles, colour and size.

## Printing a PMR

Simply click the **Print** button. Note that you do not have to highlight records- all records will be printed.

Currently we have included a single PMR printing form in mSupply. We are happy to include others- send us your designs.

*Previous: [Warnings](#) Next: [Why an HIS module for mSupply?](#)*

From: <https://docs.msupply.org.nz/docs/> - **mSupply documentation wiki**

Permanent link: [https://docs.msupply.org.nz/docs/dispensing:patient\\_medication\\_records?rev=1571249639](https://docs.msupply.org.nz/docs/dispensing:patient_medication_records?rev=1571249639)

Last update: **2019/10/16 18:13**

