

25.10. Tips and tricks

mSupply Client: Connecting to a different server

It is unusual, but you may be in a situation where your mSupply client application needs to switch between more than one mSupply Server.

Launch the mSupply client application by double-clicking on the mSupply client icon, then immediately hold down the **Alt** key until the mSupply Server connection dialog box appears:



If you tick the **Display this dialog at next startup** tick-box, this dialog box will automatically be displayed on startup of the mSupply client application, and you will not need to do the double-click, **Alt** routine described above.

There are three ways of selecting the mSupply server to connect to. These are accessed via the tabs: **Recent**, **Available** and **Custom**:

Recent tab



The **Recent** tab retains a list of all mSupply servers recently used. The list is sorted by alphabetical order. To connect to a server from this list, double-click on its name or select it and click the **OK** button.

Available tab



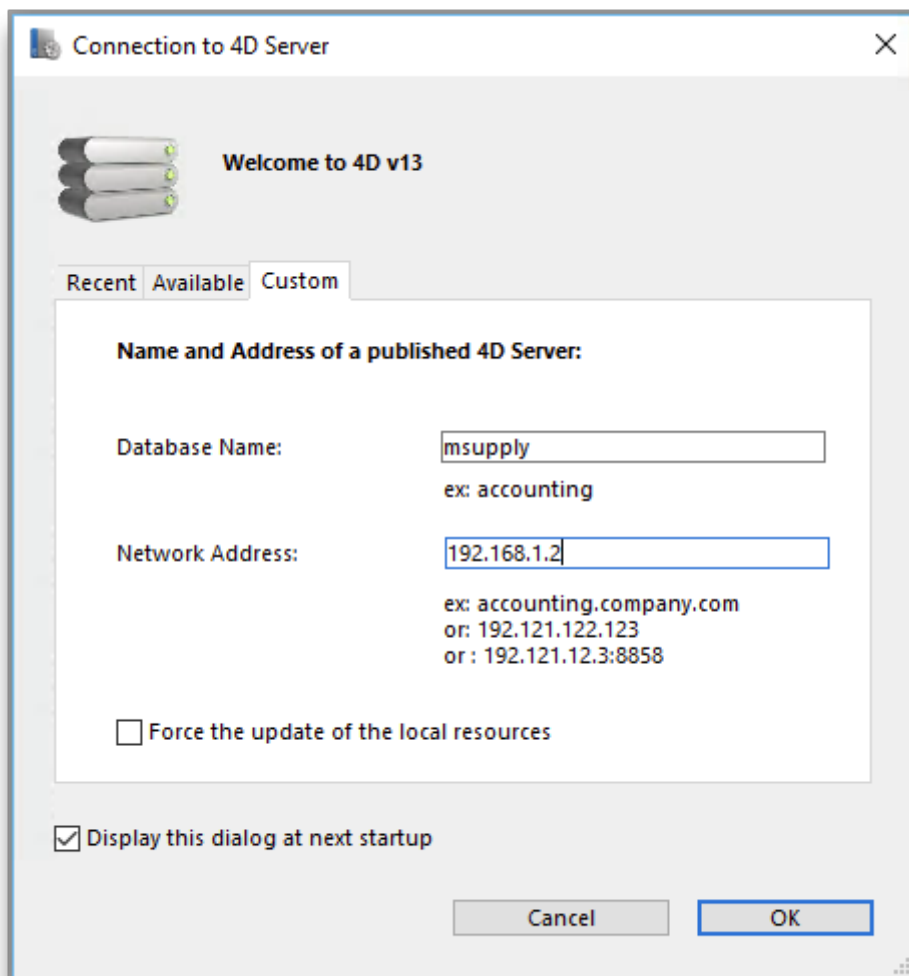
The mSupply Server includes a built-in TCP/IP broadcasting system that publishes by default the name of the mSupply Server databases available over the network. These names are listed on the **Available** tab of the connection dialog box.

This list is sorted by order of appearance and is updated dynamically. To connect to a server from this list, double-click on its name or select it and click the **OK** button.



Computer networks can be configured to stop dynamic publication of the database name on the network. In this case, you will need to manually configure the the connection on the **Custom** tab.

Custom tab



The **Custom** tab allows assigning a published server on the network using its IP address and database name.

Database name: allows defining the name of the mSupply Server database.

Network address: allows entering the IP address of the machine where the mSupply Server was launched. If two servers are operating simultaneously on the same machine, the IP address must be followed a colon and port number, for example: 192 . 168 . 92 . 104 : 19814.

By default, the publishing port of a mSupply Server is 19813. This number can be modified in the **Database Settings...** under **Client-server** tab of mSupply server.



If a database was selected in the **Recent** or **Available** tabs when you clicked on the **Custom** tab, these two fields display the corresponding information from that tab.

Once the server details have been entered, clicking the **OK** button will connect you to the server.



If you tick the **Force the update of the local resources** tick-box, it allows you systematic updating of the local resources on the client machine when it connects. As a rule, updating of the local resources is automatic on the remote machine each time it



connects, when the structure of the database has been modified between two connections. Most of the time, this option is unnecessary. Nevertheless, in certain specific cases, it may be necessary to force the update.

Emptying out a store and starting again...

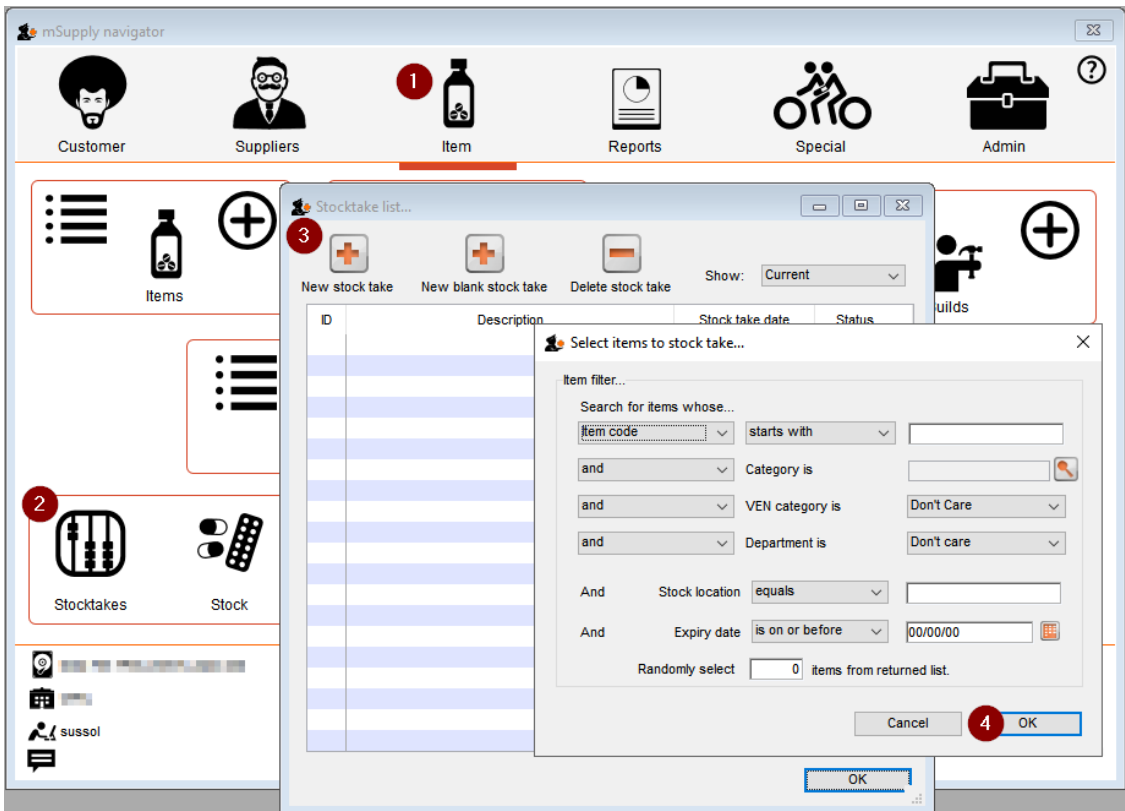
Sometimes, the actual stock situation in a store becomes so out of step with mSupply's records that you want to start again from scratch with a brand new stocktake. To do this, you will need to:

1. Confirm or delete all customer invoices with status = nw (New) or sg (Suggested). This should remove from stock all lines that have been made unavailable, but are still showing as in stock - see figure below.
 1. Click on **Customer**
 2. Click on **Show Customer Invoices**
 3. Click on **By Status**
 4. Click on **All new and suggested**
 5. Double-click on the first displayed invoice
 6. Click on **Confirm** (or, if you want to delete the CI, delete each of the lines, and then Click on **Delete**)
 7. Click on **OK & Next**
 8. Repeat steps f & g until all invoices are confirmed (or deleted).

The screenshot shows the mSupply Navigator interface. On the left, the 'Customer' menu item is highlighted with a red circle and the number 1. Below it, the 'Show Customer Invoices' menu item is highlighted with a red circle and the number 2. In the 'Transactions list' panel, the 'By Status' menu item is highlighted with a red circle and the number 3, and the 'All new and suggested' menu item is highlighted with a red circle and the number 4. The first invoice line in the list is highlighted with a red circle and the number 5. The main window shows the 'Customer invoice' details for 'DS TB OUTPATIENT' with a status of 'sg'. The 'Confirm' button is highlighted with a red circle and the number 6. The 'OK & Next' button is highlighted with a red circle and the number 7. The table below shows the invoice lines:

N. Li...	Location	Item Name	Quan	Pack Size	Batch	Exp date	Sell Price	Price exten
1	BIDHAE	Tube, Blood Coll. Vac, 13x75mm, 3.0ml, Plasti...	10	1	20150901	30/09/2...	0.00	0.00

2. Empty the mSupply store of all stock by means of an Inventory Adjustment based on an mSupply stocktake of all stock in the store
 1. Create the stocktake - see figure below.
 1. Click on **Item**
 2. Click on **Stocktakes**
 3. Click on **New stocktake**
 4. Click **OK** (accept default filter values which includes all stock)



2. Set all actual quantities to zero (0) - see figure below.
 1. Click once on the first stock line. The whole line will become highlighted.
 2. Click once on the value in the 'Enter Quantity' column. The Enter Quantity value will become highlighted
 3. Type 0, then press **Tab**. Repeat this for each line of the whole stocktake. You should be able to be faster than 2 stock lines per second, maybe a lot faster. At 2 stock lines per second, you can get through 1000 stock lines in less than 10 minutes...
3. Click on **Create Inventory adjustments** if you've got a lot of stock lines, this could take a while...

Stock take sheet...

Description: 25/01/2017 Stock take
 Comment:
 Stock take date: 25/01/2017
 Stock take key: 88
 Stock take entered date: 25/01/2017
 Stock take status: sg

New line Delete line(s) Print Create Inventory adjustments Order by

Item Name or Code
 Search by item name and code Find

General Log

Lin...	Location	Item code	Item name	Batch	Expiry	Snapsh...	Pack Size	Enter Quantity
1	Hae	791601	Boule Quintus, 5-part Diluent, 20l (EBOS 1...	1501-399	31/01/2017	2	1	0
2	Hae	791602	Boule Quintus, 5-part Lyse, 5l (EBOS 150...	1504-430	30/06/2019	1	1	0
3	Hae	791603	Boule Quintus, 5-part Stopper, 1l (EBOS 15...	1504-388	31/12/2016	1	1	0
4	F3	178015	Immunocomb HIV 1/2, 100 tests	150120	30/04/2016	5	1	5
5	F3	178015	Immunocomb HIV 1/2, 100 tests	150204	31/05/2016	3	1	3
6	A1	176796	Lopinavir 100mg + Ritonavir 25mg, Dual Co...	E443256	29/02/2020	25	60	25
7	B2	176791	Lopinavir 100mg + Ritonavir 25mg, Dual Co...	H45-876	31/10/2017	20400	60	20400
8	B1	176791	Lopinavir 100mg + Ritonavir 25mg, Dual Co...	H45-876	31/10/2017	34	36000	34
9	F1	733004	Rapid Diagnostic Test (RDT) for Troponin-1...	90AD14003	30/06/2016	1	1	1
10	F3	733004	Rapid Diagnostic Test (RDT) for Troponin-1...	20141202	31/12/2016	3	1	3
11	F1	732404	SD Bioline Dengue IgG/IgM, Kit	11DDA036A	31/10/2017	1	1	1
12	BIOHAE	743201	Tube, Blood Coll, Vac, 13x75mm, 3.0ml, Pla...	20150901	30/09/2017	53	1	53

Locked Save Sort order OK

3. Import new stock as described in [Importing items & stock](#)

Creating customers that are not visible to all the stores

In a multi-store system, you will often be wanting to create new customers that are visible in only one store. By default, when new customers are created, they will be made visible to all stores in the system. If you actually want these new customers to be visible to only one store, you will need to [edit the store visibility](#) for that customer, and un-tick the visibility for all the other stores - a tedious exercise in a system with scores or hundreds of stores!

For this reason, there is a solution: There is a [store preference](#) called **Names created in this store not visible in other stores**. To use it:

1. [Edit the store preferences](#) for the store that needs to be able to see the new customers and turn on the **Names created in this store not visible in other stores** store preference.
2. Make sure that you have [user permission](#) to create customers in this store.
3. Log in to the store
4. Create the new customers



... or import the customers - refer [Importing Names](#)

Previous: [25.09. Imprest work flow](#) | | Return to: [mSupply User Guide Home Page](#)

From:

<https://docs.msupply.org.nz/docs/> - **mSupply documentation wiki**

Permanent link:

<https://docs.msupply.org.nz/docs/faq:tipsandtricks?rev=1584115163>

Last update: **2020/03/13 15:59**

