

HIS preferences

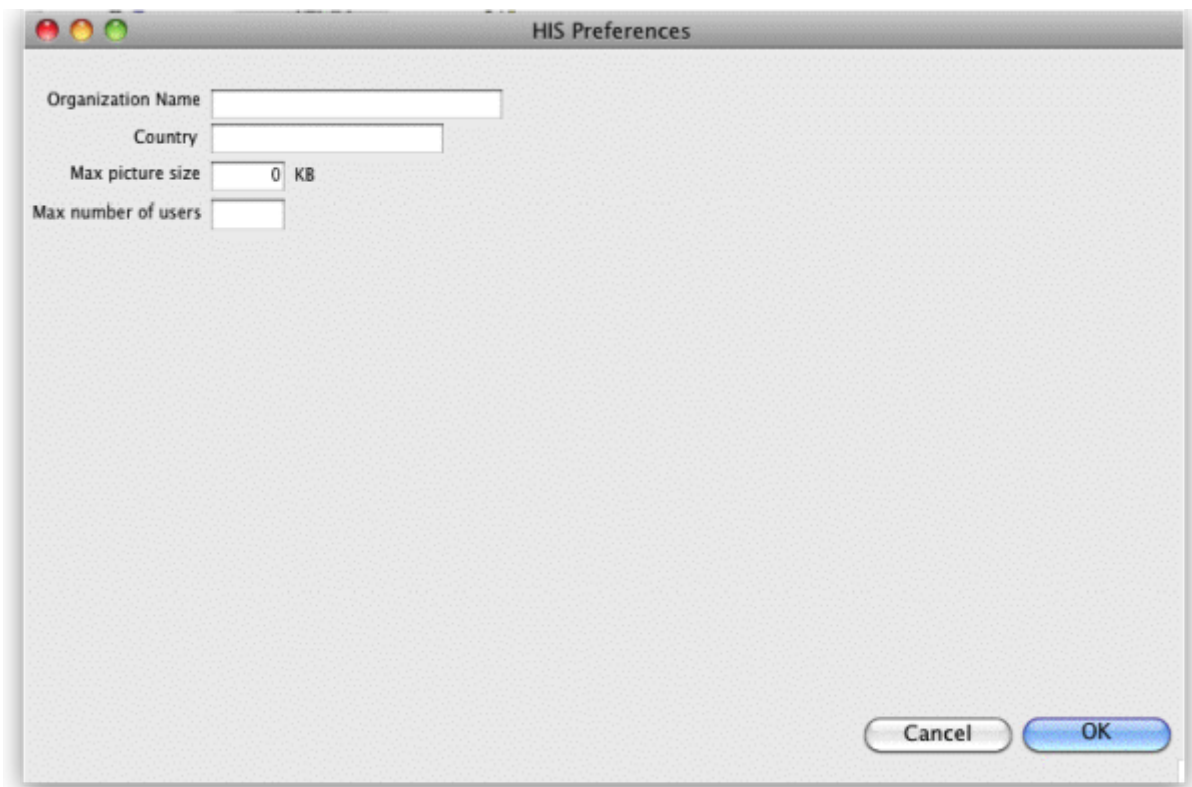
*

Organisation name: Enter the hospital name here.

Country: Enter the country you are located in.

Max picture size: Enter the maximum size of patient pictures that can be inserted. We suggest you set this value to 500KB.

Maximum number of users: Enter the maximum number of users that can log into the HIS system at one time. For example, if you purchase a 10 user license, and assign 6 users to the HIS system, it will allow 4 users to log in to the pharmacy (mSupply) module.



Previous: [Other lists](#) Next: [Patients](#)

From: <https://docs.msupply.org.nz/docs/> - **mSupply documentation wiki**

Permanent link: <https://docs.msupply.org.nz/docs/his:preferences?rev=1345410727>

Last update: **2012/08/19 21:12**

