
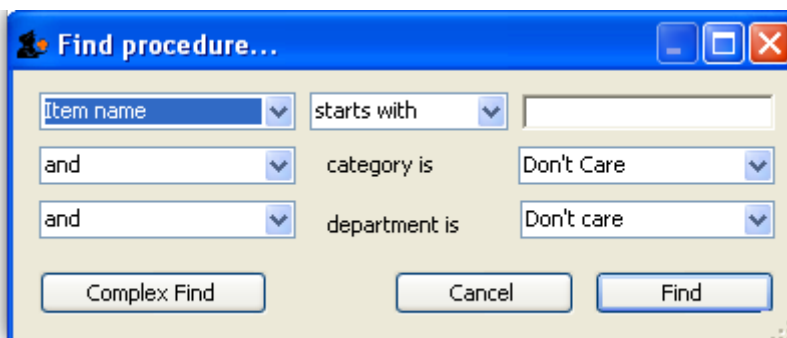


# Procedures

 Internally, a procedure in HIS is treated like a service item in mSupply, so many of the same concepts apply - see [Items](#)

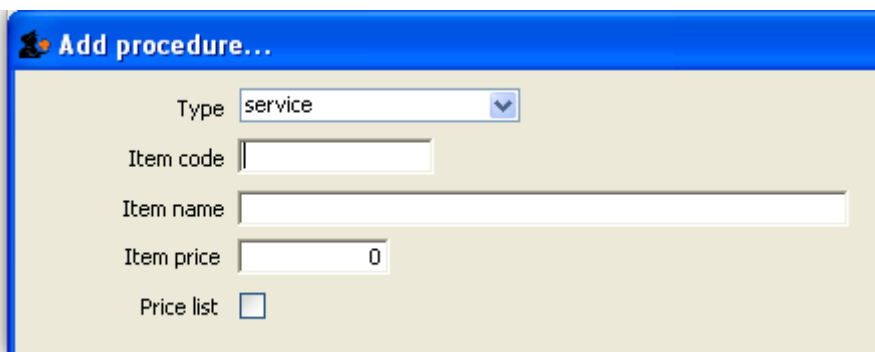
The **Special > Show procedures** menu item allows you to track surgical and other procedures performed on patients. It brings up the following window:



After setting the parameters, and clicking on *OK*, it will either show the list of procedures:



in which case, you can double-click on a procedure to view/edit it or select *New item* to create a new one. Or, if there are no existing procedures, it will go straight to the *Add procedure* window:



The type of a procedure is fixed as “service”. As for items, once a procedure has been added, there are extra fields and tabs available. However, only a subset of the normal item fields are available.

The screenshot shows a web application window titled "Procedure details...". On the left is a sidebar menu with options: General, Usage, Ledger, Notes, Misc, and Misc 2. The main content area is titled "Item name New Procedure" and includes a "Store:" dropdown menu set to "Hospital Info System".

The "General..." section contains:

- Item code: abcdef
- Category: None (dropdown menu)
- Item flag: [empty text box]
- Catalogue code: [empty text box]
- Hide in this store:

The "Pricing" section contains:

- Default margin: 0
- Default price: 2,000.00

The "Full description" section contains a large empty text area.

The "Custom fields..." section contains seven input fields:

- user\_field\_1, user\_field\_2, user\_field\_3 (text boxes)
- user\_field\_5, user\_field\_6 (text boxes)
- user\_field\_4, user\_field\_7 (checkboxes)

Previous: [ICD10 disease codes](#) Next: [Other lists](#)

From: <https://docs.msupply.org.nz/docs/> - **mSupply documentation wiki**

Permanent link: <https://docs.msupply.org.nz/docs/his:procedures?rev=1499116246>

Last update: **2017/07/03 21:10**

