

4.18. Inventory adjustments

Inventory adjustments allow you to increase or decrease the stock of an item that is recorded in mSupply®. You will need to adjust the inventory if:

- Stock is discarded (due to damage or expiry)
- Stock has been stolen.
- You find some stock on the shelf that is not in mSupply and you don't know where it came from.

DO NOT use inventory adjustments for distributing stock to customers or patients or receiving stock from suppliers. Use customer invoices or prescriptions and supplier invoices for that. Otherwise, you will lose your audit trail and reporting on transactions will be difficult.

Inventory adjustments are used to deal with a problem or fix a mistake, not in the general process of entering stock transactions into mSupply. Ideally, you'll never have to use them but we know we don't live in an ideal world!



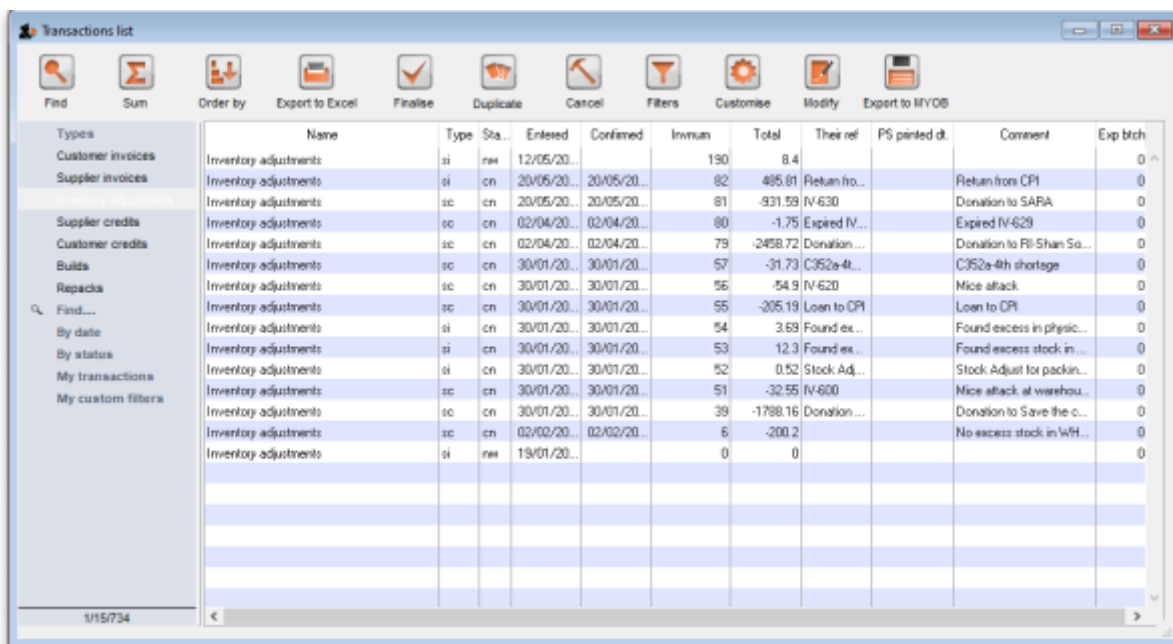
If you are doing a stocktake, it's better to use the stocktake module described [here](#) as it will create the needed inventory adjustments automatically.

Viewing inventory adjustments

Choose **Items > Show inventory adjustments** or click on the Show inventory adjustment icon on the Item tab of the Navigator:



This will open the usual transaction filter window for you to choose which inventory adjustments you want to see. Make your filter selections (or leave them alone to see the 15 most recent inventory adjustments by default) and click on the **OK** button to see the list of matching inventory adjustments:



You can double-click on any inventory adjustment in the list to view or edit it.

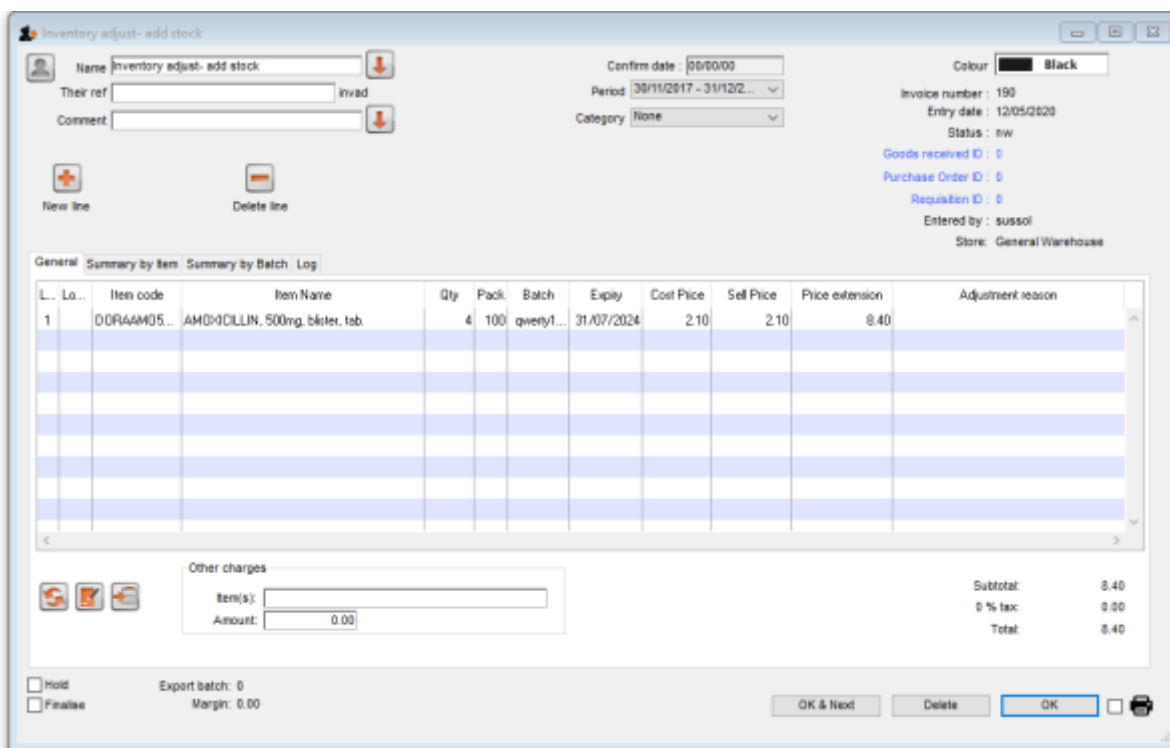
Note that *si* type inventory adjustments add stock and *sc* types reduce stock (*si* means “supplier invoice” and *sc* means “supplier credit”).

Add stock

Choose **Item > Inventory adjust- add stock** to create an inventory adjustment to add some stock into mSupply or click on the Inventory adjustment (add stock) icon on the *Item* tab of the Navigator:





The Inventory adjustment (add stock) window will open:



This transaction is almost exactly the same as a supplier invoice and you enter data in exactly the same way (see [7.01. Supplier invoices](#) for details), except:

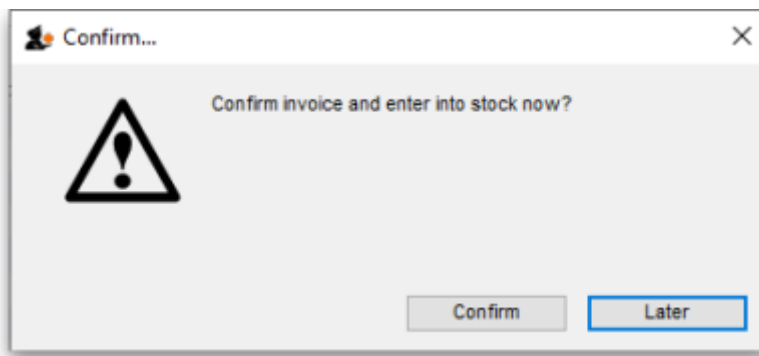
- The name (*Inventory adjust- add stock*) is filled in automatically for you and cannot be changed.
- There is an additional *Adjustment reason* column (see below for details).

 Because an inventory adjustment represents a correction for some problem or other incident, we strongly recommend

 that you enter a comment in the **Comment** field of each inventory adjustment you create, whether to add or reduce stock, so that the reason for the correction is not forgotten.

Use the **New line** button to add a line to the transaction (and the **Delete line** button to remove them), just as you would on a supplier invoice.

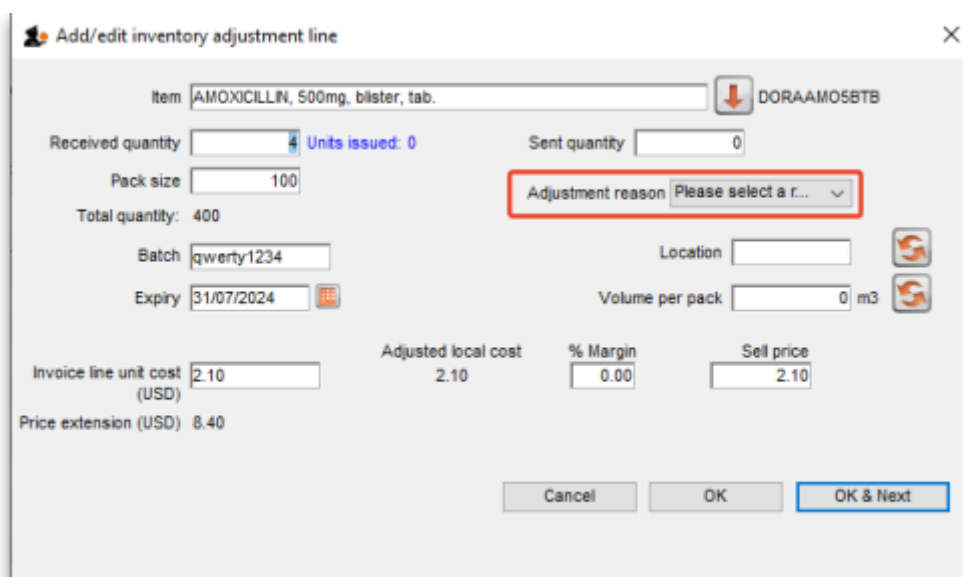
When you have finished adding lines to the inventory adjustment, click on the **OK** button. You will be asked to confirm what you want to do:



If you've finished with the inventory adjustment and want to enter the lines into stock now, click on the **Confirm** button. If you don't want to enter it into stock now (because you want to add more lines later, for example) then click on the **Later** button.

Adjustment reasons

If you have added any active *Positive inventory adjustment* reasons on the *Options* tab of **File > Preferences** (see [16.10. Options \(standard reasons\)](#)) then, when adding a line to the inventory adjustment (by clicking on the **New line** button), an **Adjustment reason** drop down list is displayed and you **must** select one of the reasons in the list before you can save the line:



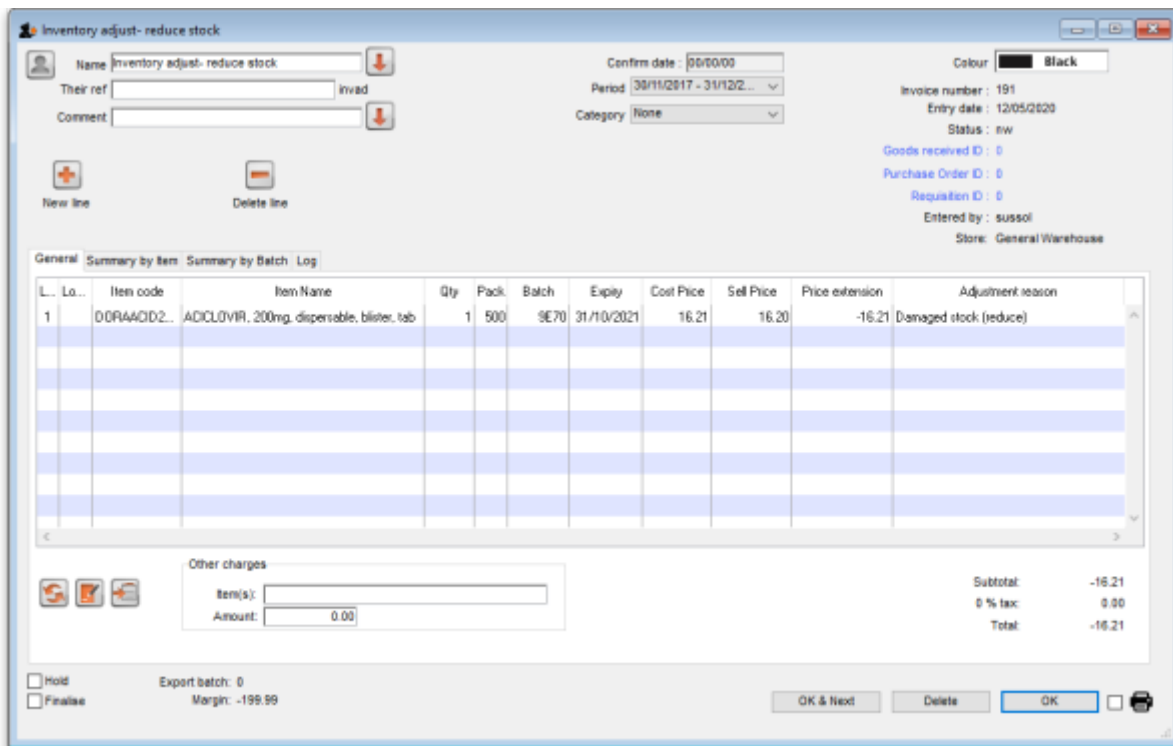
Note that existing lines that do not have a reason selected can be left with no reason selected if you click the **Cancel** button on this window.

Reduce stock

Choose **Item > Inventory adjust- reduce stock** to create an inventory adjustment to remove some stock into mSupply or click on the Inventory adjustment (reduce stock) icon on the *Item* tab of the Navigator:



The Inventory adjustment (reduce stock) window will open:



This transaction is almost exactly the same as a customer invoice and you enter data in exactly the same way (see [8.01. Issuing goods to a customer \(customer invoices\)](#) for details), except:

- The name (*Inventory adjust- reduce stock*) is filled in automatically for you and cannot be changed.
- There is an additional *Adjustment reason* column (see below for details).


Use the **New line** button to add a line to the transaction (and the **Delete line** button to remove them), just as you would on a customer invoice.


When you have finished adding lines to the inventory adjustment, click on the **OK** button. You will not be asked to confirm what you want to do, the inventory adjustment will be confirmed and the lines will immediately be removed from stock.

Adjustment reasons

If you have added any active *Negative inventory adjustment* reasons on the *Options* tab of **File > Preferences** (see [16.10. Options \(standard reasons\)](#)) then, when adding a line to the inventory adjustment (by clicking on the **New line** button), an **Adjustment reason** drop down list is displayed and you **must** select one of the reasons in the list before you can save the line:

Add item...

Item ACICLOVIR, 200mg, dispersable, blister, tab DORAACD2TB 

Line 1 Adjustment reason Please select a r... 

Quan 1 of 2

Pack 500 each Bulk/Outer pack size 0

Line	Issue	Available	Tot in store	Pack	Hold	Batch	Expdate	Supplier	Location	Cost Price	Sell price	St
1	1	2	2	500	<input type="checkbox"/>	9E70	31/10/2021	20915		16.21	16.20	

Total quantity issued 500
Total quantity available 1000

Note that existing lines that do not have a reason selected can be left with no reason selected if you click the **Cancel** button on this window.

Previous: [4.17. Stocktakes](#) | | Next: [4.20. Units](#)

From:
<https://docs.msupply.org.nz/docs/> - mSupply documentation wiki

Permanent link:
https://docs.msupply.org.nz/docs/items:inventory_adjustments?rev=1589294602

Last update: 2020/05/12 14:43

