

4.01. About items

An item in mSupply is usually a product that you purchase from a supplier, hold in stock and supply to a customer. However, there are also other types of items:

- A service item has no stock, but can still be added to customer invoices and charged for. Service item examples are a freight charge, a consultation fee, an express delivery fee, etc.
- A cross reference item points to another item, so that when it is chosen in a list, it is substituted with the item to which it refers. This allows you to have items in your system that are referred to by trade name, but are only issued according to their generic name.

Managing items is mostly done from the **Item** menu or **Item** tab on the Navigator. The item menu also contains commands for managing lists related to items such as accounts, drug interactions and units.

For how to add a new item, see [4.02. Adding a new item](#).

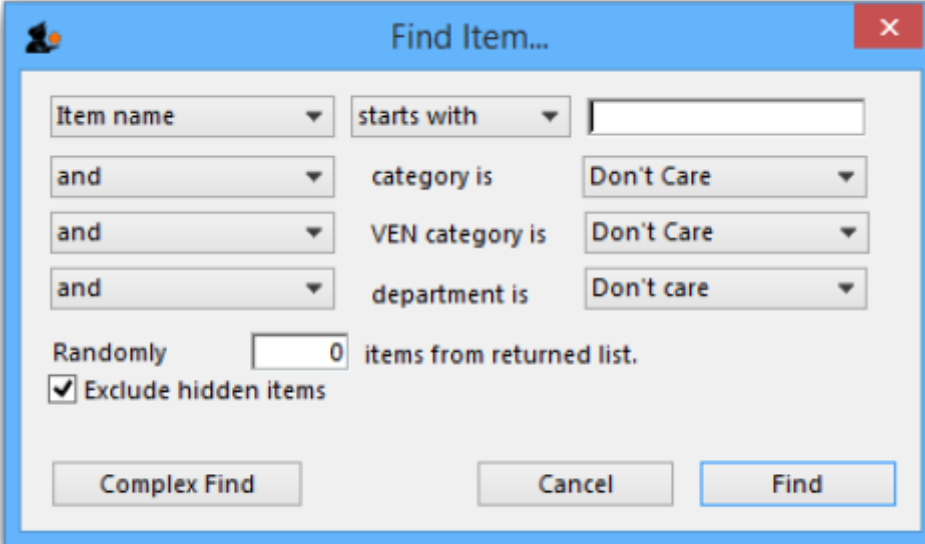
Item menu



Show items

Use this command for viewing or editing just about any information about an item.

First you are presented with a window asking you to enter search criteria to find the items you are interested in:



If you click on the **Find** button (or press the Enter key on the keyboard) without changing anything you will be shown a list of all the visible items in your store. But you can refine the search by entering and selecting different values in the different filter lines shown in the window. If you enter no value for a filter then that filter is ignored.

Randomly select x items from returned list text box: If you enter a number in here mSupply will randomly select that number of items from the items which match the search criteria you have entered in the filters above. Beware: if there are less items returned from the search than the number you enter in here mSupply will return all the items it found with no random selection.

Exclude hidden items checkbox: This is checked by default and means that only items that are visible in the store you are logged into are included in the search. If you uncheck this box then all items in all stores in your datafile will be included in the search.

If only one item is found by your search then its details are displayed, otherwise you will be shown a list of matching items.

The **Complex find** button gives you access to a more powerful query editor where you can find a very specific set of items. A tutorial on using the query editor is to be found in section [13.14. Custom reports](#).



To do a “contains” search, use the wildcard character '@'; e.g. entering “@250” will find all items with “250” anywhere in their name.

Here's an example of a list of items displayed after clicking the **Find** button:



Item Code	Item name	Default pack	Stock on hand	Flags
DORAA002	Abacavir/Lamivudine, 600/300mg, tab	1	0	
DORAA004	Albendazole, 400mg, tab	1	0	
DORAA006	Aluminium Hydrox...Hydr.), 500mg, tab	1	0	
DORAA008	Amlodipine, 10mg, tab	1	0	
DORAA010	Amlodipine, 5mg, tab	1	0	
DORAA012	Amoxicillin + Flucl...n, 250/250mg, cap	1	0	
DORAA014	Amoxicillin Syrup,...mg/5ml, 60ml, bot	1	0	
DORAA016	Amoxicillin, 250mg, tab/cap	1	0	
DORAA018	Amoxicillin, 500mg, tab/cap	1	0	
DORAA020	Amoxicillin/Clavul...g/5ml, 100ml, bot	1	0	
DORAA022	Amoxicillin/Clavulanic acid, 625mg, tab	1	0	
DINJA002	Ampicillin, inj, 500mg, vial	1	0	
SMSUA002	Apron, plastic, disposable, pce	1	0	
DORAA028	Artemether / Lume...0mg, 12 tabs, strip	1	0	
DORAA026	Artemether / Lume...0mg, 18 tabs, strip	1	0	
DORAA024	Artemether / Lume...0mg, 24 tabs, strip	1	0	
DORAA030	Artemether / Lume...20mg, 6 tabs, strip	1	0	
DINJA004	Artemether, inj, 80mg/ml, 1ml, amp	1	0	
DINJA006	Artesunate, inj, 60mg, vial	1	0	
DORAA032	Ascorbic acid (Vitamin C), 100mg, tab	1	0	
DEXTA002	Aseptol, 500ml, bot	1	0	
DINJA008	Atropine sulphate,...1mg/ml, 1ml, amp	1	0	

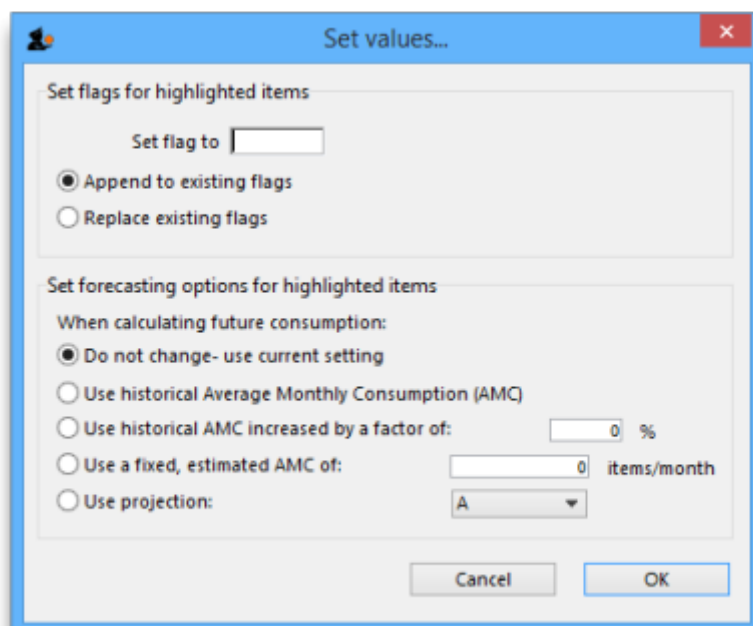
Double-click the item in the list to view its details.

Items list view

New item: Click this button to enter the details of a new item you are adding to your inventory. You can find out how to do this [here](#)

Report: Click this button to open a report editor window where you can design a report. The report will use the currently displayed records (not the highlighted records).

Set values: A flag is a quick way of identifying a group of items for use in a report.



* You can set and remove flags for multiple items at the same time. To do so, hold down the control key (command key on Mac) and click on the lines you wish to flag. They will become highlighted. Then click the “set flags” button. You will be shown a window like this:

We recommend you use a single character (or two) as the flag.

If you choose **Append to existing flags**, any items with existing flags will have the new flag added to the end of the flag. If you choose **Replace existing flags**, then the selected items will have their flags cleared. Note that you can clear all flags for all items by selecting all items (control - A) then leaving the **Set flag to.** field blank, clicking “Replace existing flags”, and then clicking the **OK** button.

Find: Clicking this button displays the **Find** window, the same as if you had chosen **Items > Show items**.

Order by: Clicking this button will bring up the standard Order by window, where you can choose fields by which to sort the displayed items

Print: Click this button to print the items currently displayed in a list.

Modify: Click this button to show details for the first record that is highlighted. Clicking the **OK and Next** button in the item details window will jump to the next highlighted record. To select multiple records, hold down the control key (command on Mac) while you click on the records you wish to select.

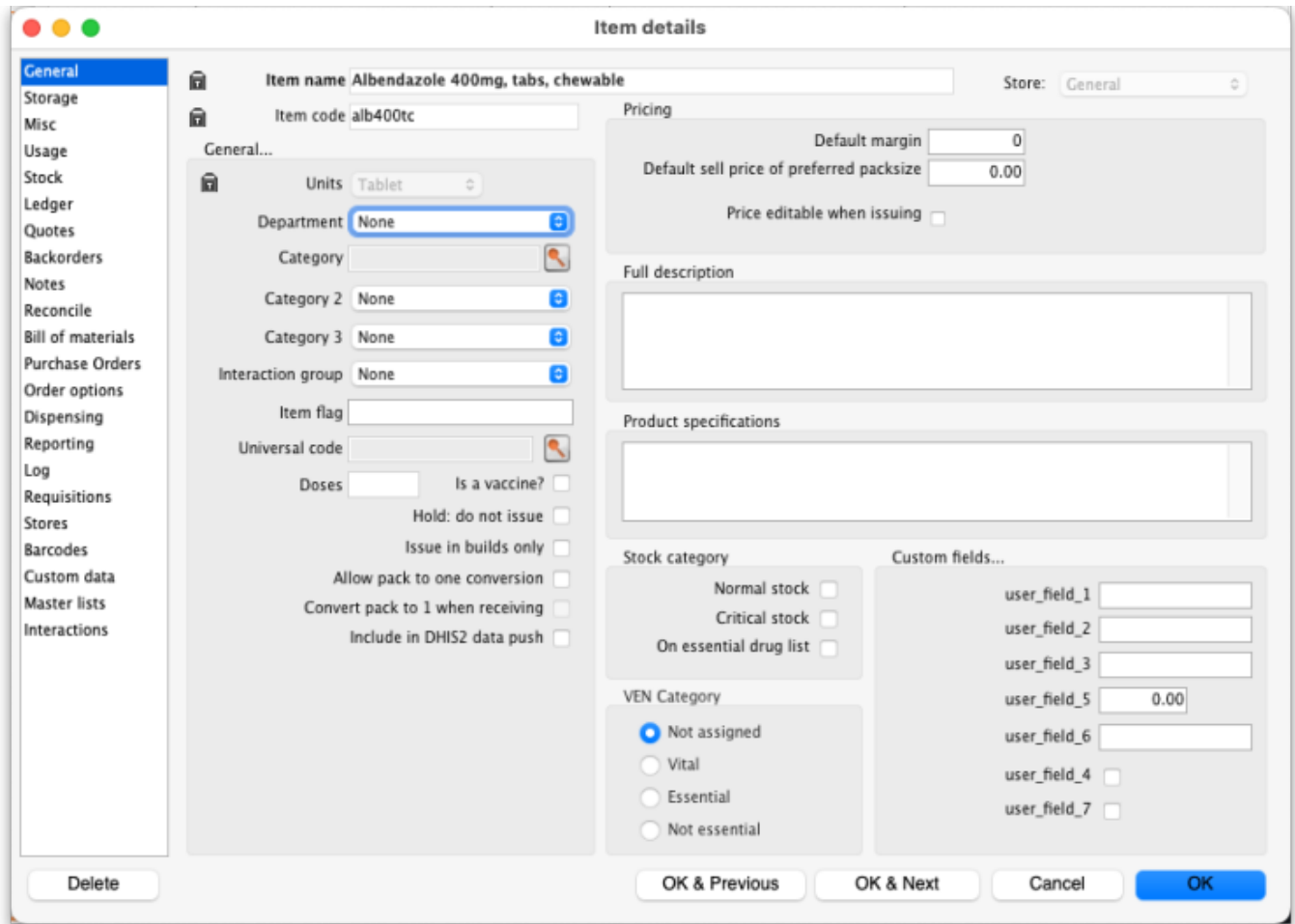
Duplicate: Click this button to create a new item with the same details as the selected item. A message box like the one below will appear. Click on button **Duplicate** to confirm creating the duplicate. Note that the only difference you will see between the existing item and the newly created item is the name of the new item ends with the text '(copy)'. The new item will be added to the end of the currently displayed list of items.



Note that for recording and audit purposes a Log event is created when an item is duplicated. For more information on log events see section [25.19. The system log](#).


Customise list: Clicking this button will show a window where you can choose which fields from the items table are shown in the list view. See [Working with lists](#).

Item details window




Buttons in the item details window

Delete: Provided that an item has no transactions, quotes, order lines or backorder lines, it can be deleted, and this button performs that action.

 Once you have received stock for an item, it cannot be deleted. You can delete an item immediately after you have created it or imported it. Note that if you have imported an item and stock, you can delete it, and its associated stock will be deleted too (but not once it has been used in a transaction such as an invoice or build).

OK & Next: Saves changes, exits the window, then brings up the next item in the item list. If you did not have an item list open, or if you have reached the last item in the list, you will be returned to the list or the initial menus, depending on your starting point.

Cancel: Exits the window without saving changes.

 Changes you have made to quotes, notes and backorders will be saved, even if you click **Cancel**.

OK: Saves changes then exits the window.

Tabs on the item details window

The item details window displays a vertical list of 'tabs' down the left side. Click on the appropriate item to view a 'tab' displaying particular information about an item. The Item Details Window normally opens at the **General** tab.

- [4.01.01. Items - General tab](#)
- [4.01.02. Items - Storage tab](#)
- [4.01.03. Items - Misc\(ellaneous\) tab](#)
- [4.01.04. Items - Usage tab](#)
- [4.01.05. Items - Stock tab](#)
- [4.01.06. Items - Ledger tab](#)
- [4.01.07. Items - Quotes tab](#)
- [4.01.08. Items - Backorders tab](#)
- [4.01.09. Items - Notes tab](#)
- [4.01.10. Items - Reconcile tab](#)
- [4.01.11. Items - Bill of materials tab](#)
- [4.01.12. Items - Purchase orders tab](#)
- [4.01.13. Items - Order options tab](#)
- [4.01.14. Items - Dispensing tab](#)
- [4.01.15. Items - Reporting tab](#)
- [4.01.16. Items - Log tab](#)
- [4.01.17. Items - Requisitions tab](#)
- [4.01.18. Items - Stores tab](#)
- [4.01.19. Items - Barcodes tab](#)
- [4.01.20. Items - Custom data tab](#)
- [4.01.21. Items - Master lists tab](#)
- [4.01.22. Items - Interactions tab](#)

Previous: [4. Items](#) | Next: [4.01.01. Items - General tab](#)

From:

<https://docs.msupply.org.nz/docs/> - mSupply documentation wiki

Permanent link:

https://docs.msupply.org.nz/docs/items:item_basics?rev=1578988655

Last update: **2020/01/14 07:57**

