

5.01. Names: using, adding and editing

About names

In mSupply a “name” is one of these:

- customer: a recipient of your goods
- supplier: someone who sends your store goods
- manufacturer: someone who makes the goods that you receive, store and distribute
- donor: an entity that donates goods to you (you can track donated stock)
- patient: someone you dispense goods to
- others: you'll find other types e.g. benchmarks mentioned through out the documentation

A name can also be more than one (or all!) of these at the same time.

Adding a customer, supplier, manufacturer, donor or benchmark

Adding a new customer



In a multi-store system, you will quite likely not want the new customer to be visible to every store. By default, mSupply will make a new customer visible only to the store that you are logged in to when you create the customer. This store will be made the [Supplying store](#). Make sure that you are logged in to the supply store before proceeding.

To add a new customer:

- Log in to the supplying store
- Choose *Customer* > *new customer* from the menu.
- The form shown below will come up.
- The customer checkbox will be checked and disabled (from editing).

The screenshot shows a 'New customer' form with the following sections:

- Name:** Code, Charge to, Name, Type, Facility, HSH code, HSH name.
- Contact:** email, web site, Phone, Fax.
- Status:** Hold checkbox.
- Price Category:** A dropdown menu.
- Store:** General dropdown.
- Currency:** USD dropdown.
- Customer details:** Supplying store: General dropdown.
- Printing:** Print invoices alphabetically checkbox.
- Category:** Customer (checked), Supplier, Manufacturer, Benchmark checkboxes.
- Other:** Category 1-6 (all set to None), State/Region (None), Flag.
- Main/Billing Address:** Address 1-5, Post code, Country.
- Postal address:** Multiple lines for address.
- Shipping address:** Multiple lines for address.

Buttons at the bottom: Delete name, OK & Next, Cancel, OK.

Adding a new supplier

- To add a new supplier, choose *Supplier > New supplier* from the menu (makes sense really!)
- The window will look the same as for adding a customer, except the supplier checkbox will be checked and disabled (from editing).

Adding a new manufacturer

- To add a new manufacturer, choose *Supplier > New manufacturer* from the menu.
- The window will look the same as for adding a customer, except the manufacturer checkbox will be checked and disabled (from editing).

Adding a new donor or benchmark

- Select *Customer > New customer* or *Supplier > New supplier* from the menu.
- The same window for adding a new customer or supplier will open and you should check the *Donor* or *Benchmark* checkbox in the Category section.

Fields in the names entry window

Name Code

The unique code to identify this customer, supplier or manufacturer.

Charge to

mSupply is made to work in tandem with an accounting program (although it will also function just fine by itself). The “Charge to” code is what is exported with each invoice. Generally you should make the charge code and name code the same (If you want, there is an option in the Preferences > Misc tab to make sure this is the case). For example:

- If you have 3 hospitals you supply, but you send the bills to one centre for payment, you may want to enter each hospital with its own name code, and all of them with the same charge code. In your accounting program you would just enter one debtor (customer) with a code the same as the charge code. eg.

Customer	Name code	Charge code
Fred H Hosp	fhhosp	bluehos
Mary P Hosp	mphosp	bluehos
Sam Q Hosp	sqhosp	bluehos

- In your accounting program you would enter “Blue Hospitals Assoc” with the code “bluehos”
- For a supplier, if you have entered a default currency and margin these will be entered, but you can override them. Every supplier should have its currency entered (The currency it uses for your invoices). If the currency isn't yet in your system, close the name entry window and choose *Currencies* from the *Special* menu to add it.



- if you do not wish to use different name codes and charge codes, check the “supplier name code and charge must match” and “customer name code and charge must match” check boxes in the mSupply Preferences. If you do this, the charge code will automatically be identified with the name code.
- spaces are not allowed in name codes and charge codes

Either the “customer” or “supplier” check box will be checked as appropriate, depending on whether you have chosen “new supplier” or “new customer” from the menus to produce this window. However, you can still alter things here without upsetting mSupply.

Name

The customer/supplier name. (Remember you can use the *Tab* key to move from field to field)





If there are non-printable characters before or after the name, code or charge code they will be removed. Any non-printable characters in the name, code or charge code will be replaced with an underscore (_).

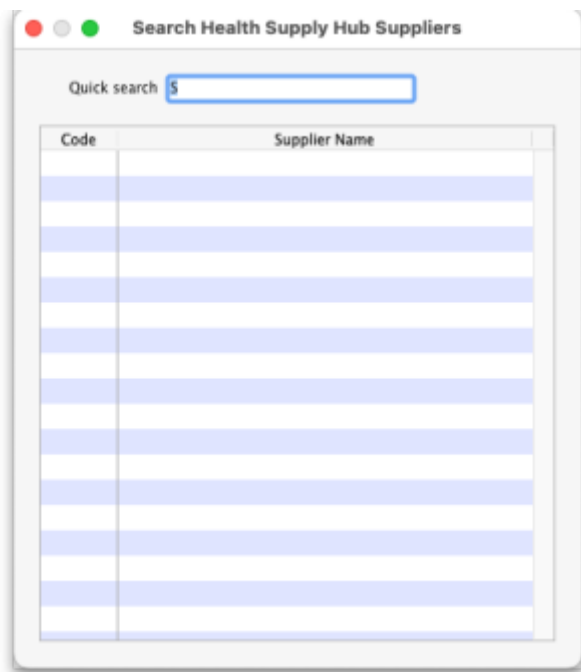
HSH code & HSH name

These are used when using the Health Supply Hub (replacement for the [Remote tender module](#) - see the [Health Supply Hub](#) page for details) to link suppliers or manufacturers with their record on the Health Supply Hub server and maintained by The mSupply Foundation. If your system does not use the [Health Supply Hub](#), then you can ignore these fields.

To link a supplier or manufacturer to one already entered in the Health Supply Hub:

1. set your Health Supply Hub preferences ([16.01. General preferences](#))
2. click on the padlock icon next to the **HSH code field** to unlock it and enable the  button.
3. click on the  button.

mSupply will then search for a supplier or manufacturer (depending on whether the name is a supplier or manufacturer in mSupply) in the Health Supply Hub with a name having the same first letter. A window like this opens:



If the correct supplier or manufacturer is not shown in the list then clear the contents of the **Quick search** field. All suppliers or manufacturers registered on the Health Supply Hub are then displayed. You can refine the search by typing something in the **Quick search** field and only suppliers/manufacturers with names that begin with what you typed will be displayed.

When you see the supplier/manufacturer name that you wish to connect to the supplier in mSupply, double-click on it to select it; the Health Supply Hub code of the supplier/manufacturer will be put in the **HSH code** field and the supplier/manufacturer's Health Supply Hub name will be shown in the **HSH name** field.

If the search is unsuccessful or there is a problem connecting to the Health Supply Hub, you will be shown an appropriate message.

Note: if the name you are trying to link to the HSH is a customer then you shown a message telling you that linking it to a supplier or manufacturer in the Health Supply Hub is not possible.

Type

In the main entry screen, there are 4 check boxes to mark each entry as a customer, a supplier, a manufacturer and an additional *Benchmark* category. This last category is a feature of the Tender Management module, and is fully explained in that section, under [Using Benchmark prices](#)

Status - Hold checkbox

If this is checked this name can not be used for receiving or issuing goods.

Donor checkbox

This is applicable to suppliers only. There are a few situations in which this box should be checked:

1. If this supplier/organisation provides goods free of charge (either in whole or in part).
2. If this supplier/organisation provides funding (either in whole or in part) for purchasing.

Price Category

Selection of any of the categories will fix a certain price margin for that Supplier or Customer. The price category value is entered in *File > Preferences > Prices* . When goods are being issued to this customer, the selling price is increased/decreased by the percentage specified in the Preferences for this price category.

- Eg: Consider customer XYZ, who is in category B, and in the preferences category B is assigned a value of 50. If an item is issued to customer XYZ with a normal selling price of \$10, the selling price on this invoice will be \$15.

Address and contact details

These should be completed with relevant details

- For customers, you can enter separate delivery and billing addresses as necessary.

Other section

Categories

These category fields are used for reporting and are available for you to make whatever entries are appropriate in your situation. For example, you might wish to subdivide your Hospital category by number of beds, or your Clinics by the number of patients seen daily, etc. Or you may wish to identify your customers by their geographical location (region, district, state etc.) or by location type - urban, city centre, rural, remote, etc. The choice is yours - the main point to remember is that these fields are searchable, enabling you to produce reports relating to very specific criteria.

- There are 6 category fields available for selecting as required.
- Each category has its own drop down list containing the categories which have been defined using the menu item **Supplier > Show categories...** or **Customer > Show categories...** (see [Name Categories](#) for more details).
- The labels of these 6 categories can also be changed in the preferences (see [General preferences, Names tab](#) for details).

Custom fields

Custom fields are similar to Category fields, the main difference being that these fields are not validated using a drop-down list, and so can't be reliably used for categorisation.

Analysis

You can use this field to group together certain types of customers or suppliers. You can filter the report by selecting the group in the *Analysis* field.

Postal address

Here you can enter a postal address if it is different to the physical address of the supplier.

Supplying store

As of mSupply versions (Mobile and Desktop) released since 2019, the concept of a **Supplying store** is less relevant than it was. The feature is still active, can be utilised with custom code, and is the default store for internal orders are if this customer becomes a stoer in its own right.

Extra information for customers only

Shipping address: If the name is a customer, shipping address fields will be shown.

Extra information for suppliers only

Currency: Enter the currency code of the currency this supplier uses for invoicing you.

Margin: Enter the percentage margin to apply to items received from this supplier.

Freight factor: Enter the amount to add to quotations from this supplier to adjust quoted prices for freight. For example: a physical check on invoices from IDA reveals that freight to Nepal generally amounts to about 15% of the net value of the invoice. Therefore we would enter "1.15" in this field for IDA. Note that if suppliers quote you "CIF" prices, then you should enter "0" here.

About manufacturers

When you are receiving goods, you can optionally specify the manufacturer of each item. Manufacturers can be chosen from a list that is made up of names which have the *Manufacturer* checkbox checked.

For the manufacturer field to be shown, the option must be turned on:

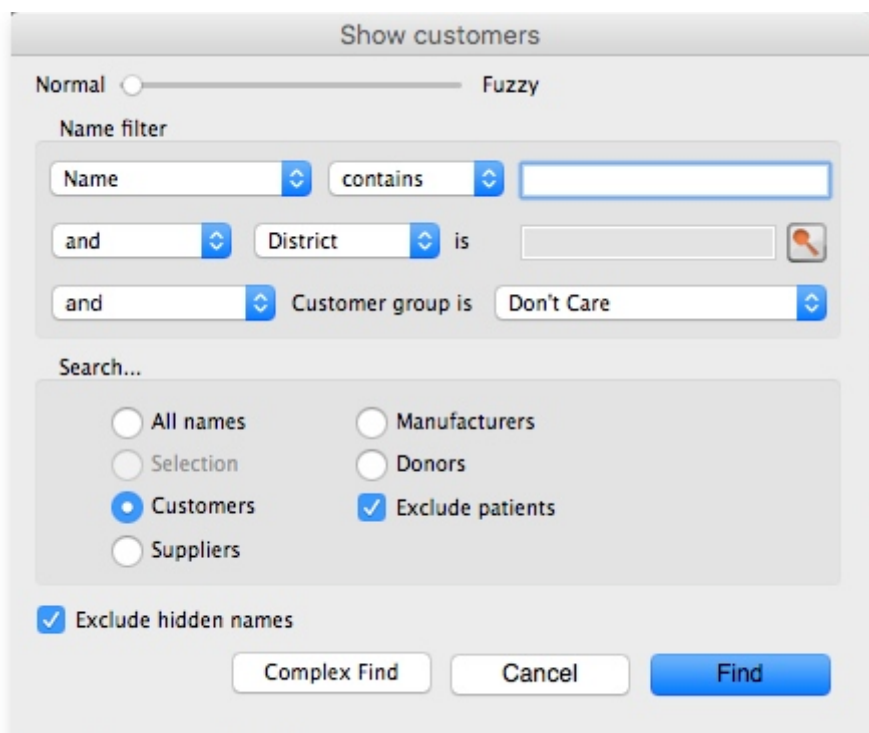
- **Special > Show stores > [choose your store and double-click] > Preferences tab**
- Check the **Able to specify manufacturer when receiving, ordering or quoting for items** checkbox

Editing a customer, supplier or manufacturer

Finding a name

Before you can edit a name, you have to find it and display its details! For this example we will edit a customer. Editing a supplier is just the same, except that you start by choosing *Show supplier* from the *Supplier* menu.

Choose *Customer > Show Customer*. You are presented with a window to enter as much of the Customer name or code as you know:



- The **slide bar** at the top of the window may be set to Normal, at the left, or at intermediate points towards the Fuzzy end (right); this determines the accuracy of matching your entry; when set to Normal, the search will only match exactly what has been entered; when set at Fuzzy the search will list entries which are approximate matches to what has been entered. The accuracy with which the list matches the entry is determined by the position of the slider.

- If you leave the **Name/Code** text field empty, clicking the **Find** button will produce a full list of all customers.
- You can enter values for the other filters too (or them only!) if you want to refine your search.
- Note that the window has a series of radio buttons to select the target of your search - *All names, Customers, Suppliers, Manufacturers, etc.* So even if you start this search from, say, **Customer > Show Customers...**, by selecting the *Suppliers* radio button, you can search in suppliers rather than customers.
- The **Exclude patients** checkbox is checked by default and means that any patients you have in your datafile will not be included in the search. If you uncheck it, any patients in the current store will be included in the search.
- The **Exclude hidden names** checkbox is checked by default and means that any names hidden in your store (but probably visible in other stores) will not be included in the search. If you uncheck this box then the search will include all names in all stores, and their visibility will be ignored.

If the search finds only one name that matches the filter criteria you entered, its details window will be displayed. If more than one name matches then you are shown a list of them all

Code	Charge to	Name	Address 1	Address 2	Currency	Category 1	Flags	Custom Data
ALD	MCG	Alders Store	12 Excellence Lane	Russia	USD			
AMN	AMN	Amnesty Hospital	100 Christmas Rd	New Zealand	USD			{"Custom Code":{"data":"ABC"},"Insured":{"data":1}}
Baltimor	Baltimor	Baltimor	Cristo Rei	Dili DHS	USD	DILI		
BIK	BIK	Bike Hospital	111 Cycle Lane	New Zealand	USD			{"Custom Code":{"data":"ABC"},"Insured":{"data":1}}
CAC	CAC	Cactus Hospital	87 Books Road	Brazil	USD			
camelrefhosp	camelrefhosp	Camelbak Refe...ospital (Store)	Australia		AUD	Bau...re)		{"Custom Code":{"data":"ABC"},"Insured":{"data":1}}
DIL-020-N	DIL-020-N	National Health Laboratories	East Dili, CRISTO REI	DILI	USD	DILI		
Elm	Elm	Elm Pharma	897 Diagon Ally	Greece	USD			

Buttons in the names list window

New

This button allows you to enter the details of a new customer

Modify

This button opens a window displaying the details of the highlighted customer, allowing their details to be modified.

Set Flags

This button allows you to mark certain names with a flag.

- First, highlight the names you wish to flag by holding down the control key (command on Mac) and clicking the names in the list you wish to use. Then click the Flags button to show a window where you can enter the flag you wish to add, and decide whether to replace any existing flags or append the new flag to the old one.

Print

Clicking this button will print a list similar to the one displayed on screen.

Find

This button shows the same find window as choosing the menu item did so you can find a different group of names.

Order by

This button allows you to sort the displayed list by the criteria you choose. The Labels and Print buttons will use the order that is displayed. By default, names are displayed alphabetically based on the name column.

Merge

This button allows two customers to be merged into one; highlight the two entries click on the Merge button to display this window:



Choose the record you wish to keep and click on *OK* ; the data from the deleted record is then merged with the data of the record being kept. If you change your mind, click on the *Cancel* button, and the merger will be cancelled.

Labels

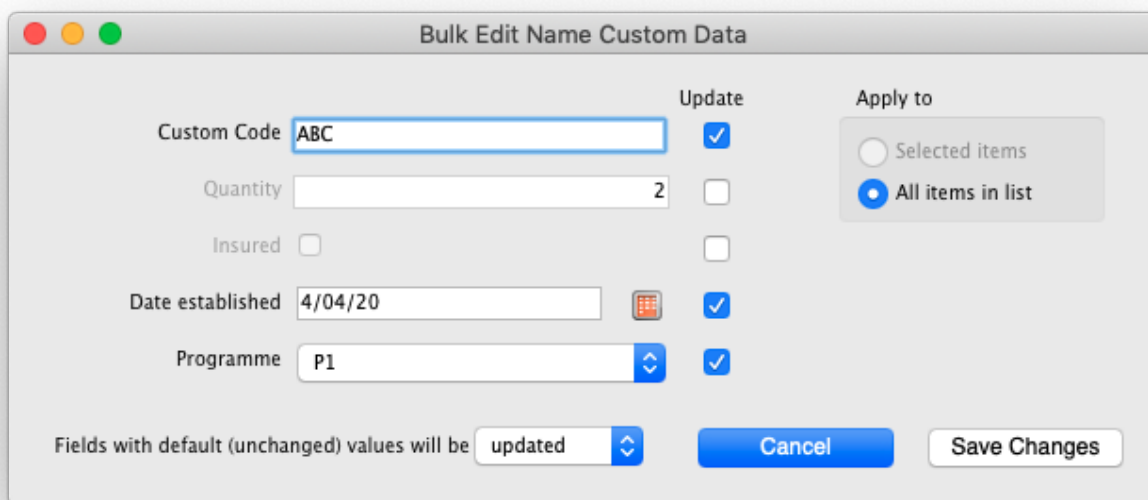
Clicking this button allows you to print address labels for the names in the list. The label editor is displayed.

Report

Click on this icon to open the Quick Report editor window. Use of the Quick Report is discussed elsewhere in the guide. See [Custom Reporting Tutorial](#)

Custom data

This allows you to bulk edit the [Custom data fields](#) associated with the displayed names. An editor window like this will be displayed:



Only fields with their checkbox selected in the “Update” column will be modified. Note that you have the option to apply the changes to **all** names currently displayed in the list or only ones that you have **selected** before opening the editor.

Click “Save changes” to apply. After confirmation and processing, you will see your changes reflected immediately in the *Custom Data* column of the names list. It is recommended that you have the *Custom Data* column displayed (see **Customise** below) before bulk editing custom data so you can clearly see which names have been changed.

If you want to remove certain fields entirely from the names, select the field(s)' “Update” checkbox, then switch the selector at the bottom so it says “Fields with default (unchanged) values with be *removed*” (instead of “*updated*”). Any fields you haven't changed from their default values (i.e. blank for text, 0 for numbers, etc.) will be removed upon saving. You can completely remove *all* custom

data for selected/displayed names by selecting all "Update" checkboxes, leaving all values default, and choosing the "removed" option.

Make sure you know what you're doing when bulk editing as you can easily over-write a lot of data if you're not careful.

Customise

Allows you to choose which columns to display using this window (Note: this only affects the columns you see in this list, it won't affect what other users see):



Columns on the left are available. Columns on the right are the ones in use in your names list. Click a row in either column then click the move left or right button to transfer it to the other column. Click **OK** when you're done, or **Cancel** if you want to stick with what you've got. Your choice of columns to display will be remembered for the next time you display a list of names (customers, suppliers etc.).

OK Button

Closes the window

Editing or viewing a name

To edit/view a particular name, if you are looking at a list of names double-click the name you want to edit on the list (no need to do this if you are already looking at the name's details page because only 1 name was returned from your search).

You will be shown the name's detail window which has a sidebar showing several tabs, *General*, *Invoices*, *Backorders*, *Quotes* etc. and opens at the *General* tab:

The screenshot shows the 'Edit customer/supplier' window. On the left is a sidebar with tabs: General (selected), Invoices, Backorders, Quotes, Notes, Contacts, Group, Purchase orders, Item lists, Requisitions, Store, and Photo. The main area is titled 'New customer1' and contains several sections: 'Name' with fields for Code (new1), Charge to (new1), Name (New customer1), and Master ID (0); 'Contact' with fields for email, web site, Phone, and Fax; 'Status' with a 'Hold' checkbox; 'Price Category' with a dropdown set to 'A'; 'Customer details' with 'Store' (General), 'Supplying store' (General), and 'Print invoices alphabetically' checkbox; 'Category' section with 'Customer' checked and 'Supplier', 'Manufacturer', and 'Benchmark' unchecked; 'Other' section with Category 1-6 dropdowns (all set to 'none') and a 'Flag' field; 'Main/Billing Address' with fields for Address 1-5, Post code, and Country; 'Postal address' with three stacked fields; and 'Shipping address' with three stacked fields. At the bottom are buttons for 'Delete name', 'OK & Next', 'Cancel', and 'OK'.

Deleting names

Click on the **Delete** button in the bottom left hand corner to delete the name.

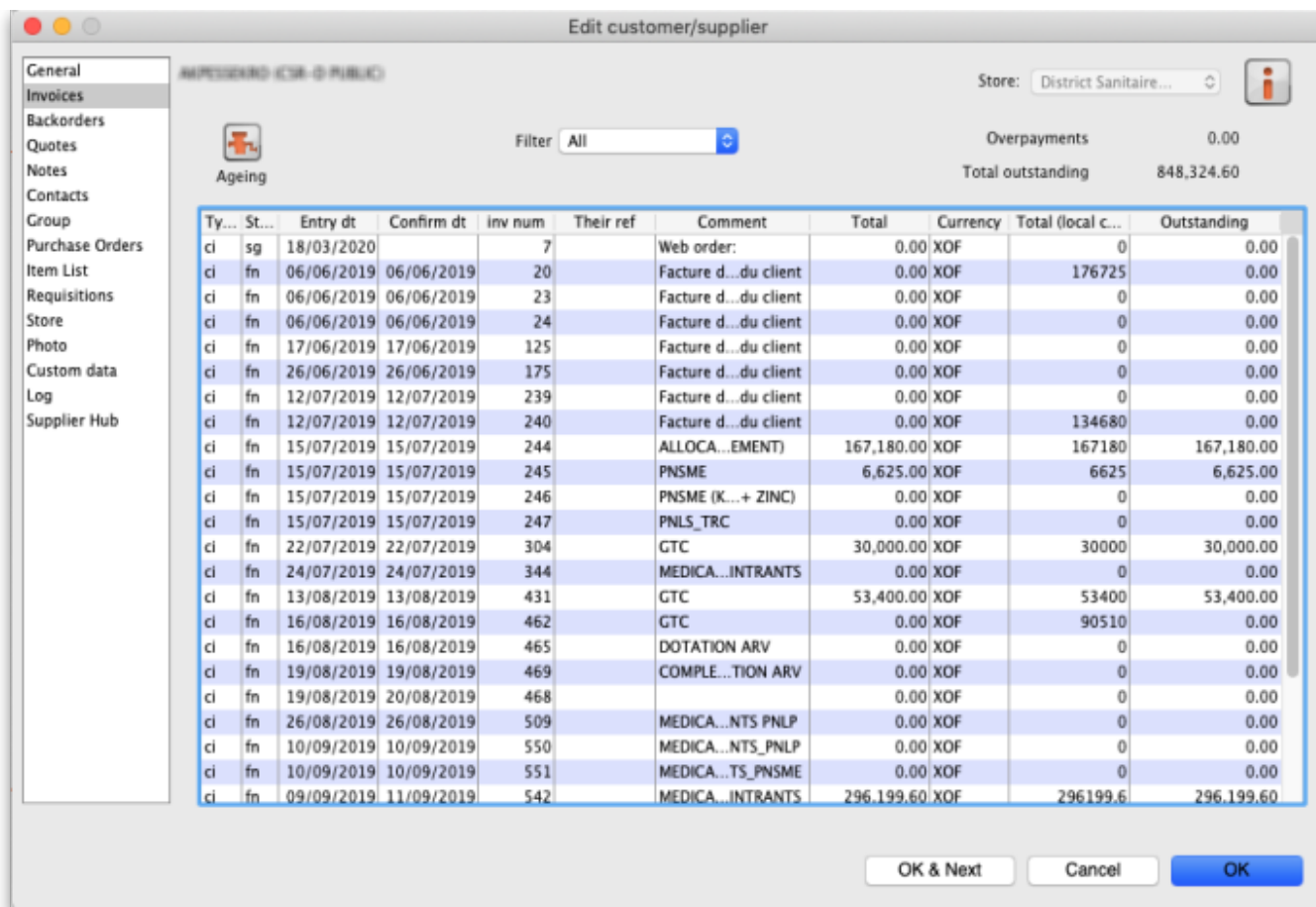
If a name has transactions entered against it, you will not be able to uncheck the relevant check box in the *Category* section, and you will not be able to delete it. For example, if a supplier has invoices entered against it, you will not be able to uncheck the **Supplier** check box, and you will not be able to delete the supplier.

Putting a name on Hold

If you wish to prevent future transactions with a name, change it's status to on 'Hold'.

Invoices tab

Here you can view the invoices for a customer or supplier.



Note that the *Total outstanding* field shows a customer's payment balance and is only shown if the customer receipts module is turned on (see [11.02. Receiving payments from customers](#)).

You are able to edit an invoice directly from this window by double-clicking the one you wish to edit. A new window will open with the invoice details displayed.

Customer invoice

Name: Confirm date: 17/12/08 Colour:

Their ref: 102824 CS04 Period: 01/01/08 - 31/12/08 Invoice: 3,040

Comment: tuesday order Category: None Entry date: 16/12/08

Goods receive ID: 0

Status: cn

Entered by: Pharmacy assistant

Store: General

New line

Delete line(s)

Backorders

History

General | Summary by Item | Summary by Batch | Transport details

...	L...	Location	Item Name	Quan	Pack Size	Batch	Exp date	Sell Price	Price exten
	1	TAB	Condom male unit	5	144	6J107	30/09/11	0.00	0.00
	2	NON	Gauze swab 8ply 10cmx10cm	3	1			4.58	13.76
	3	NON	Gauze swab 8ply 5cmx5cm	5	1			1.72	8.60
	4	NON	Examination Gloves large	1	100			0.00	0.00
	5	AAA	Amoxicillin 500mg cap	1000	1			0.00	0.00
	6	VAC	Hep B 10 dose vial	20	1	WVA0602	26/11/09	0.00	0.00
	7	LTE	Chlorhexidine 1% solution (mL)	1	5000	80356	30/03/12	0.00	0.00

Other charges Item:

Amount: 0.00

Subtotal: 22.36

0 % tax: 0.00

Total: 22.36

Hold

Finalize Export batch: 0

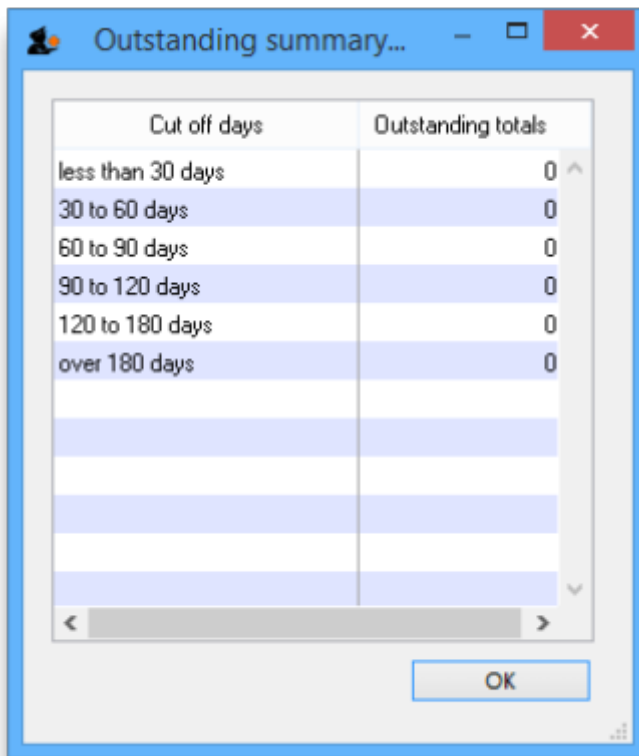
Buttons on the Invoices tab

Print Range

Click this button to print a range of invoices for a customer. You will be asked to enter the first and last invoice numbers to be printed.

Aging

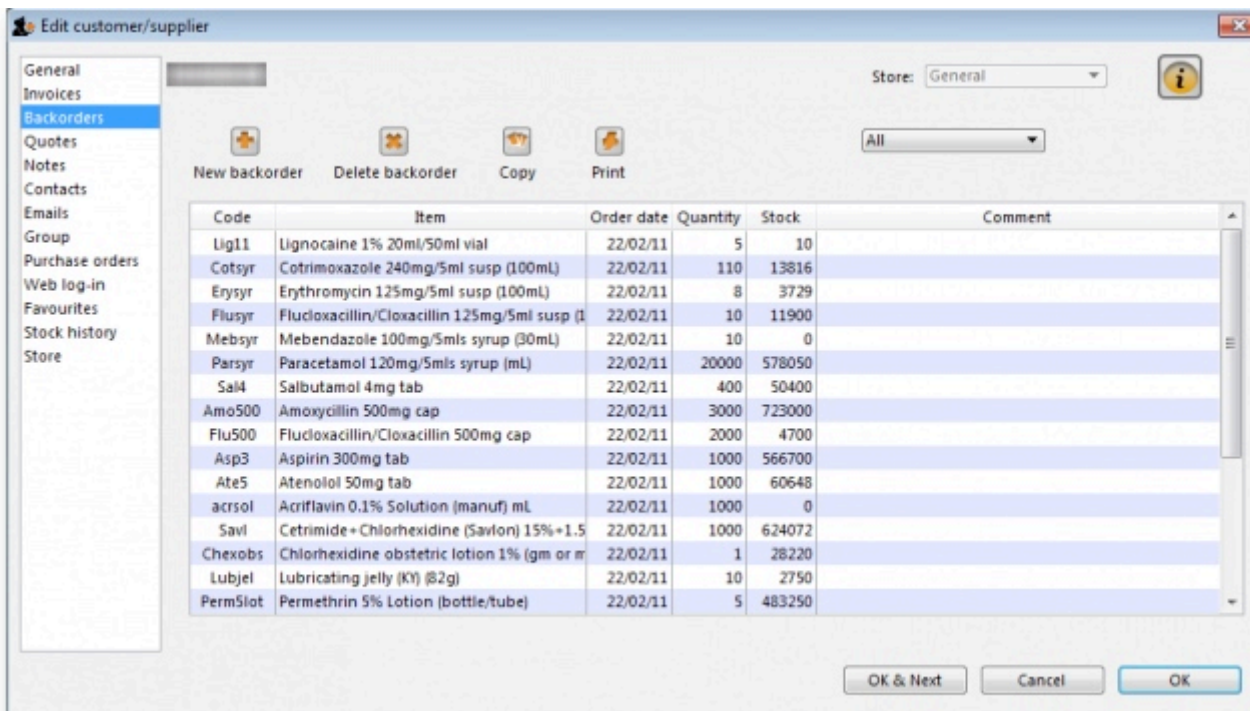
Click this button to display a list of aging categories and the outstanding unpaid balance for each invoice in each category.



Dates

Choose a date range from this menu to show quickly recent invoices, or to revert to showing all invoices

Backorders tab

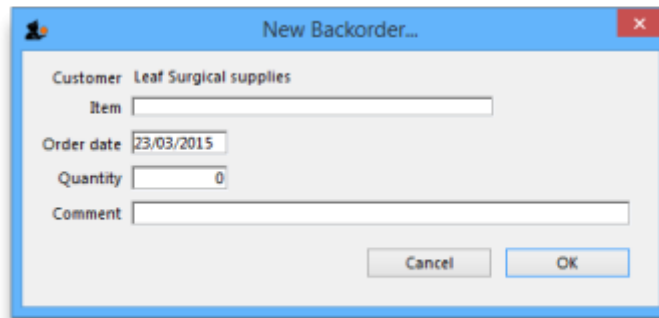


- Here you can view, add and edit the backorders for a customer. mSupply allows entry of backorders against suppliers as well, but we are not sure why you would want to do this!

Buttons on the Backorders tab

New backorder

Clicking this button presents you with a window where you can add a backorder line for this customer.



- Type at least a portion of the item code or item name, then press the Tab key.
- Today's date is automatically entered. You can change the date if you like
- Enter the total quantity owing.
- Enter a comment (e.g. an expected arrival date)
- Click *OK* to save changes and exit the window.

Delete backorder

Click a backorder line to highlight it, then click this button to delete the line. You can also select several at once (using *ctrl/cmd+click* and *shift+click*) or all the backorders in the list using *ctrl/cmd+a* and delete them at once as well.

Copy

This command copies the backorder to the clipboard, allowing you to paste the report into an email message, word processor or spreadsheet document.

Print

The list of backordered items for the customer is printed.

Viewing backorders

Double-click a backorder line to edit the line. You will be shown the backorder entry window, where

you can change any details you wish.

Show

This drop-down list allows you to choose which backorders to display.



- Backorders are normal items that have not been supplied to customers.
- Ad Hoc items are items that customers have ordered but which you do not want to add to your stock list, rather making a special order just for that customer.

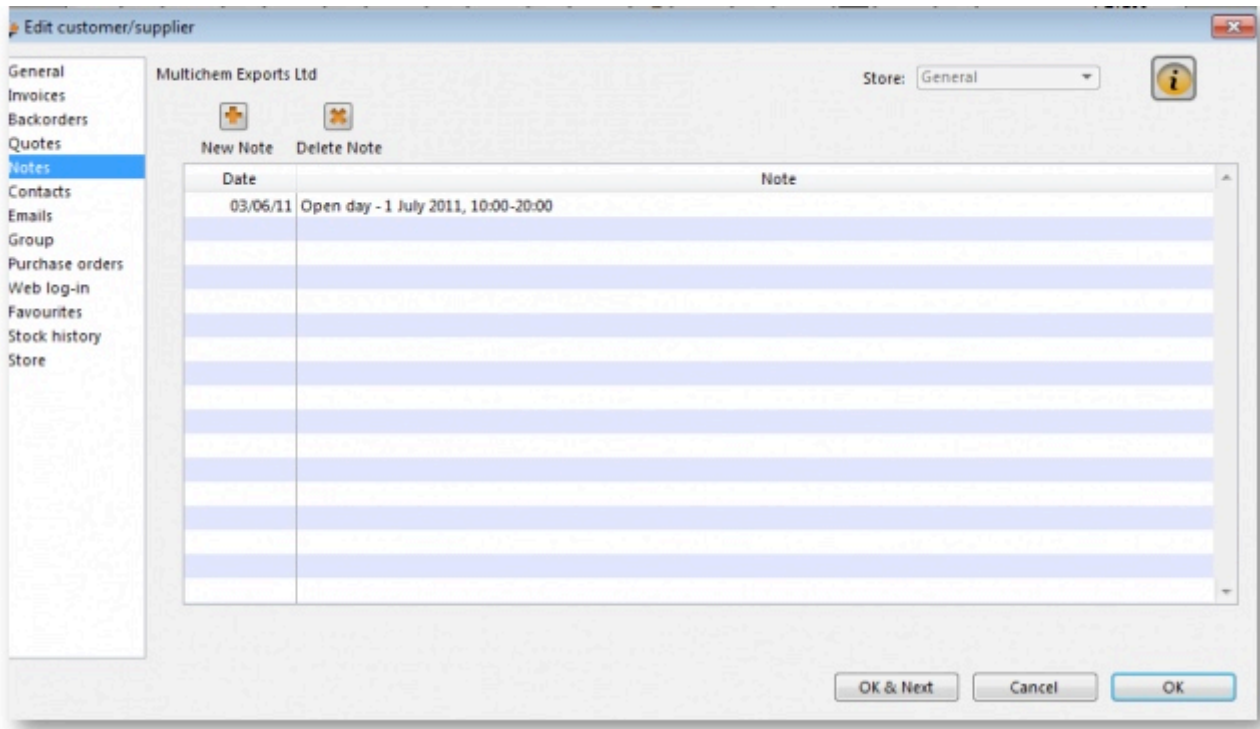
Quotes tab

Item	Date	Cur...	Rate	Price	Pac...	Freight	S	Cost	Adj Cost	Pr...	Valid Until	Comment
Chloramphenicol 5% ear drops	25/02/09	NZD	0.7485	3.55	1	1.00		2.65	2.6571		20/03/09	NZ. Air freight
Phenytoin 50mg/ml amp	25/02/09	NZD	0.7485	115.0	5	1.00		86.12	17.2259		20/03/09	250mg/5ml. NZ. Air freight
Ranitidine 25mg/mL amp	25/02/09	NZD	0.7485	13.65	5	1.00		10.21	2.0434		20/03/09	NZ. Air freight
Suxamethonium 100mg/2ml amp	25/02/09	NZD	0.7485	230.3	50	1.00		172.38	3.4477		20/03/09	NZ. Air freight
Amoxicillin+Clavulanate 500mg+1	25/02/09	NZD	0.7485	66.00	100	1.00		49.40	0.4940		20/03/09	unk brand, india. Air
Enalapril 5mg tab	25/02/09	NZD	0.7485	3.10	100	1.00		2.32	0.0232		20/03/09	unk brand, india. air
Griseofulvin 500mg tab	25/02/09	NZD	0.7485	97.00	500	1.00		72.60	0.1452		20/03/09	unk brand, india. air
Salbutamol 4mg tab	25/02/09	AUD	1.0000	5.96	500	1.00		5.96	0.0119		20/03/09	unk brand, india. air
Hydrocortisone 1% cream (15g tub)	25/02/09	NZD	0.7485	3.25	1	1.00		2.43	2.4326		20/03/09	unk brand, india. air
Metformin 500mg tab	25/02/09	NZD	0.7485	14.45	500	1.00		10.81	0.0216		20/03/09	unk brand, india. air
Blood test strips - Advantage II (50	12/03/09	NZD	0.7485	30.25	1	1.00		22.64	22.6421		09/04/09	Ro CIF price - air freight
Naloxone 400mcg/ml amp	31/03/09	NZD	0.7485	49.65	5	1.00		37.18	7.4370		30/04/09	AF,
Phenoxyethylpenicillin (PerV) 12	31/03/09	NZD	0.7485	3.95	1	1.00		2.95	2.9565		30/04/09	AF
Captopril 25mg tab	31/03/09	NZD	0.7485	25.65	500	1.00		19.22	0.0384		30/04/09	AF Fij (Apotex)
Meloxicam 100mg tab	21/02/09	NZD	0.7485	7.90	100	1.00		6.97	0.0597		20/03/09	AF

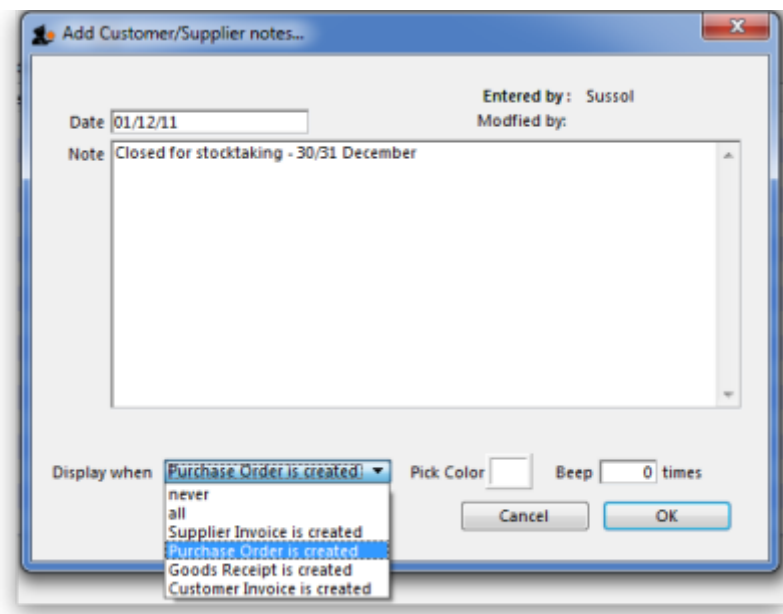
You can view the quotations you have entered in mSupply for this supplier.

Notes tab

To add, edit or delete a note, click on the *Notes* tab, and this window displays:



Click on *New note* to create a note, or select an existing note and double click on it to view, edit or delete it.



- The date on which you are entering a new note is already completed, and in the main panel you should type in the wording of the note itself.
- In the lower left of the window is a drop-down list offering various choices concerning the displaying of the note on screen; it may appear as an alert when a Supplier invoice is created, when a Purchase Order is created, etc..

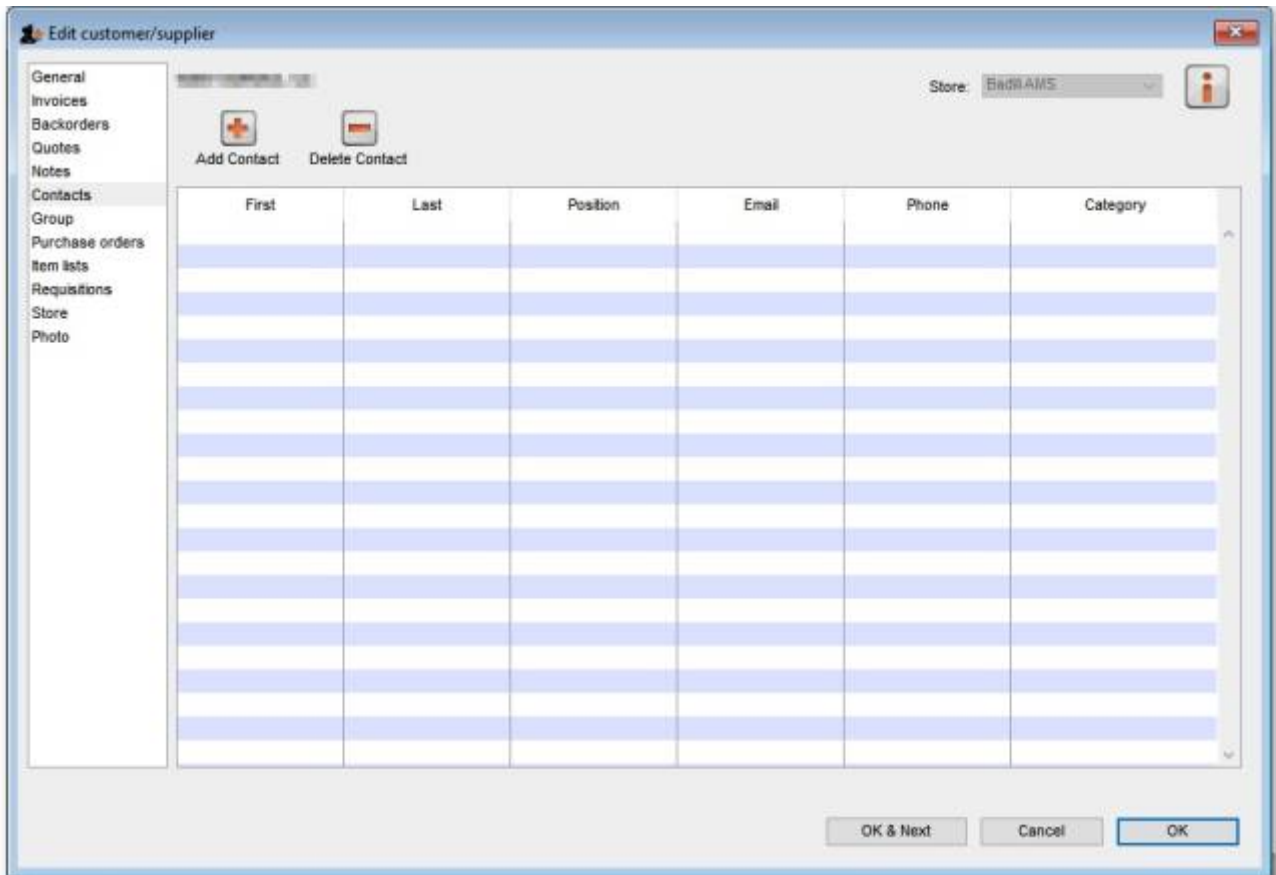
If **never** is chosen, the note will never be displayed on screen, and if *all* is chosen, it will display for all events for this customer/supplier. You may also set the background colour of the note , but as the text is always black, dark colours should be avoided. A further option allows you to have one or more audible `beeps' sound when the note is displayed. Each note will display according to the attributes set for it, independently of other notes defined for the same customer/supplier.

Subsequently, when this customer/supplier is selected and depending on the display settings made, the note will appear on screen. Be aware that the note does not disappear automatically - you must close it manually.

The text of a note can be up to 32,000 characters.

Click **OK** when you are finished.

Contacts tab



Adding contact

To add a contact for this customer or supplier, click the **Add contact** button, then enter the details in the window that appears:

Add a contact...

Last

First

Position

Phone

Email

Address 1

Address 2

Country

Comment

Category

Category 2

Category 3

Info if related to a customer or supplier....

Name

Can login to the web interface

Username

Password

Cancel OK

Deleting a contact

To delete a contact, click on the contact you wish to delete, then click the **Delete contact** button.

Group tab

Edit customer/supplier

London Dispensary

Store: General

Customer group: none

Item departments which can be supplied to this group.

Item departments

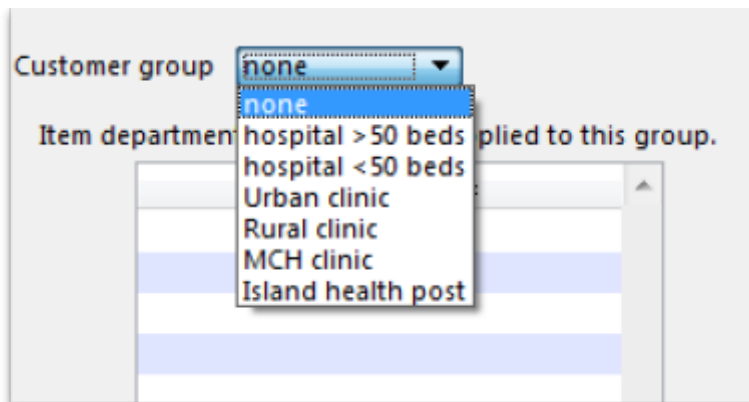
Warning: setting a customer group can affect which items can be supplied to them

OK & Next Cancel OK



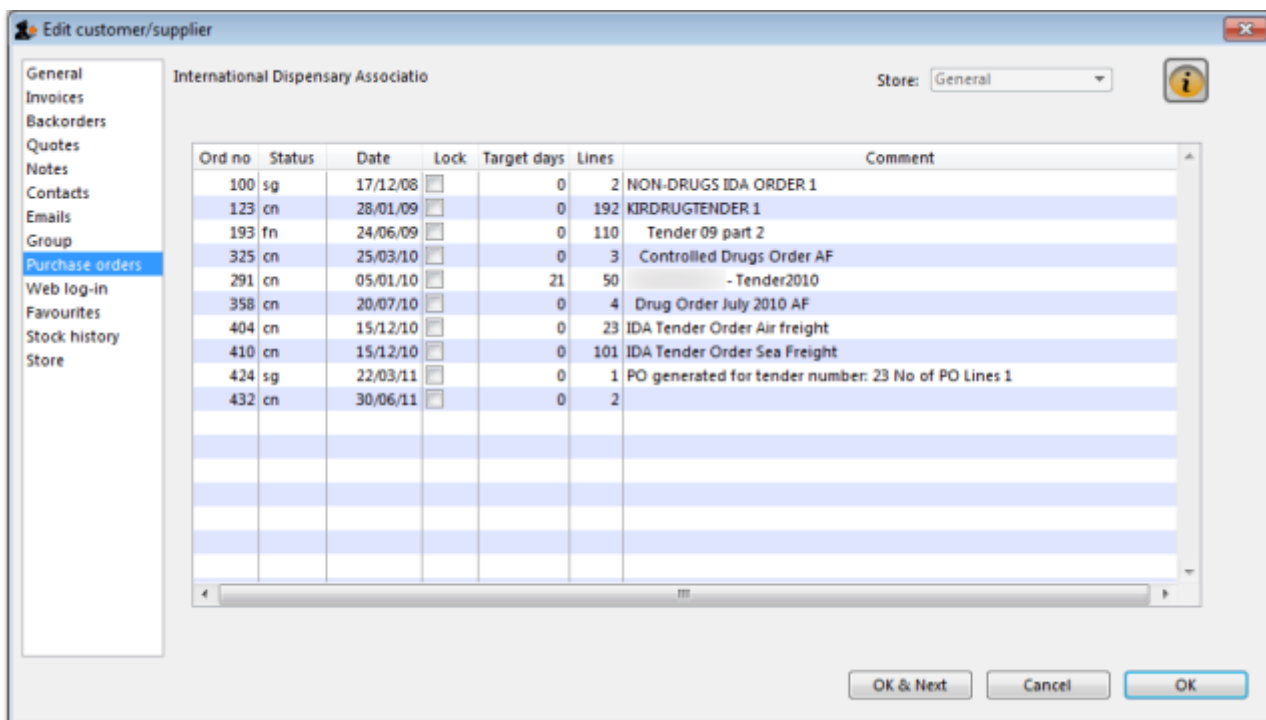
Groups are only relevant to customers, not suppliers.

If this customer has been added to a group, this tab displays the name of that group. An explanation of groups and how to work with them is here: [Show groups...](#)



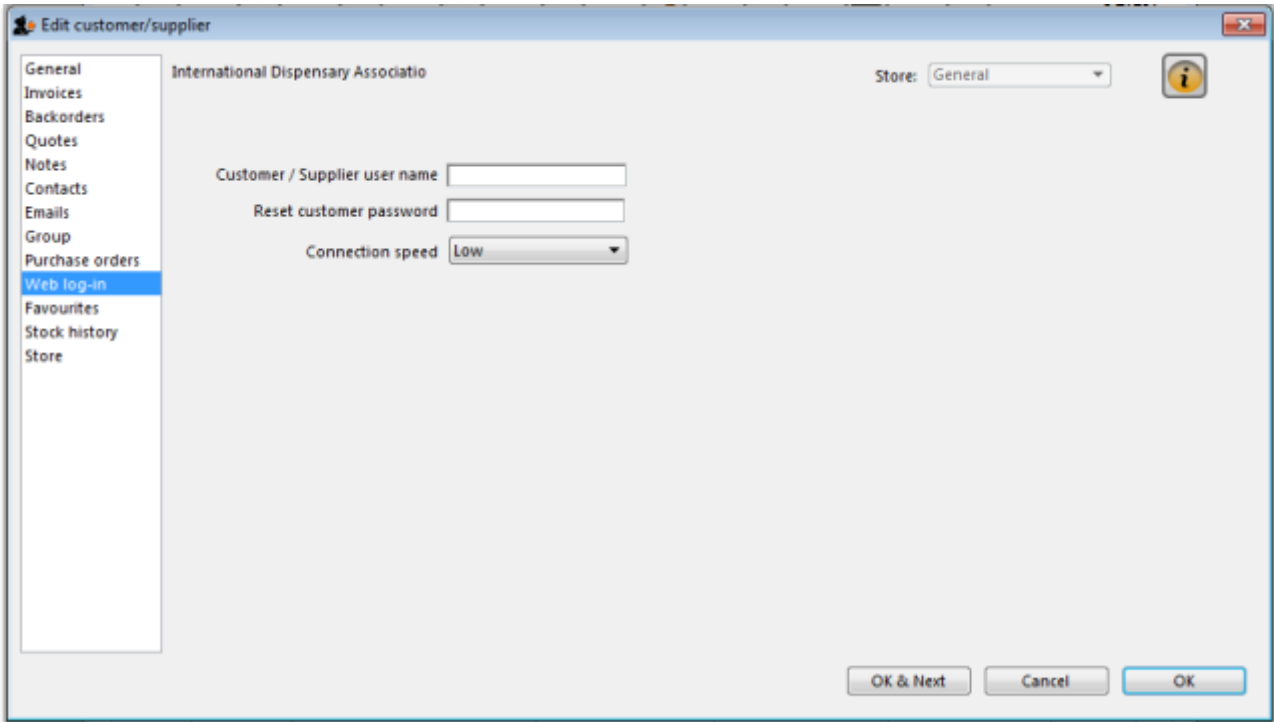
Here you can select the group of which a customer is a member. When you choose a group, you will be shown a list of item departments which are linked to the chosen group. Once the group system is activated in the Preferences, only items belonging to one of the listed departments (or items with no department) may be supplied to that customer.

Purchase orders tab



This tab shows a view of Purchase Orders for the current name, and applies to suppliers only.

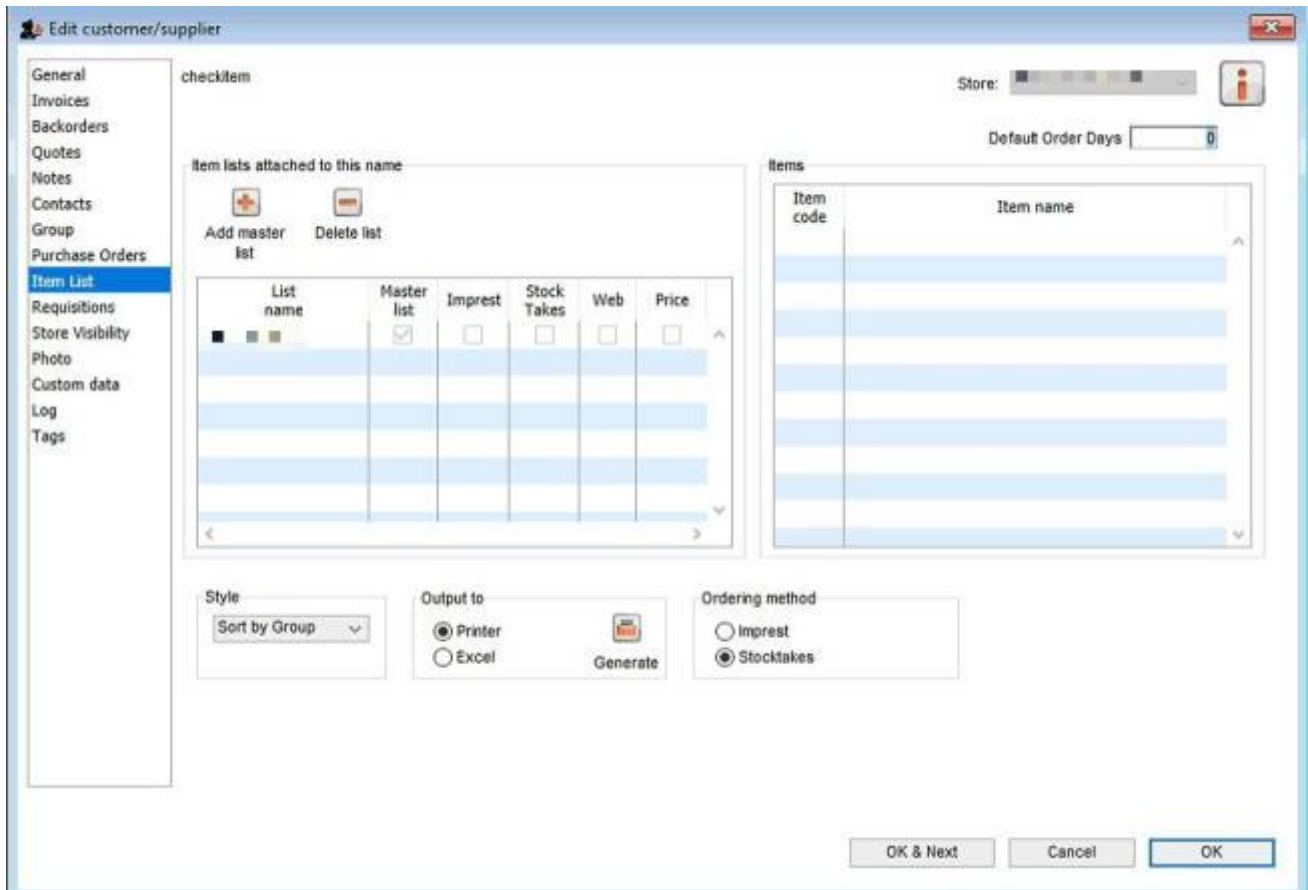
Web log-in tab



If you are allowing customers to access their order information using the mSupply web server, this is the window where you assign a logon name and password to a customer.

Also displayed on this tab is the internet connection speed. It should be noted that this value is derived from your network settings, and may not be edited manually.

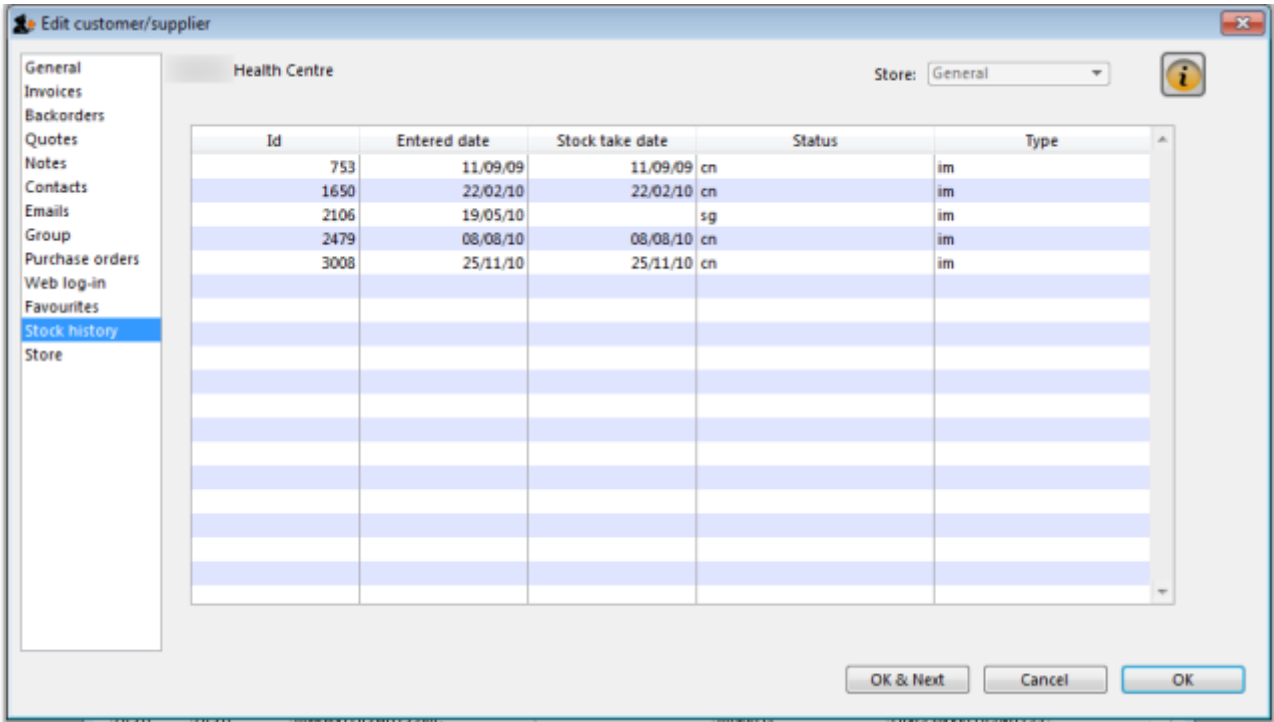
Item lists tab



This tab is used to assign master lists to customers for use in requisitions and mSupply mobile. For more information, see [Item master lists](#).

Note: Before version 5.3 customers could also have local lists assigned to them (they applied to that customer only) but these have been removed from version 5.3 onwards.

Stock history tab



A list of stock histories, showing dates of both the stock take and the date of entry into the computer, the ID reference, the status and the type, is displayed.

Store Visibility tab

Updated version 4.12

The tab shows which stores the customer/supplier is visible in. Only when the visibility checkbox is checked will the customer/supplier be visible to 'this' store, which is needed if the store will receive and/or issue goods from 'this' store.




There can be a huge number of stores in this list. If you want to find a particular store or group of stores you can type in the *Search stores* field just above the list. This will restrict the list to only stores with a name that contains what you have typed.

- **All on button:** When clicked, this will check all the checkboxes in the *Visible in store* column and the button label will change to *All off*. Clicking it then will uncheck all the checkboxes.
- **Copy button:** Will copy the current state of the *Visible in store* checkboxes.
- **Paste button:** Will make the current state of all the *Visible in store* checkboxes the same as it was when the **Copy** button was clicked.



- You can only edit the visibility of any name in another store if you have permission to login to the store *and* to edit name visibility in that store:
 - if you're just editing visibility in a single store, then an error dialog will popup and the state of its *Visible in store* checkbox will revert to its previous value.
 - **however**, when using the bulk **All on**, **Copy** and **Paste** buttons to update visibility in multiple stores, there is no error dialog and only the stores that you have permission for will be affected.
- If you edit the visibility of store name A in store B, then the visibility of store name B in store A will be updated to match i.e. inter-store visibility is always symmetrical.
- If you are using a [syncing](#) system, and editing visibility



for a store name, that can affect the sync settings for the store on other sites i.e. if you make it invisible to all stores which are **Active** on a site, then the sync status will become **None** on that site; and if you make it visible to at least one store which is **Active** on a site, then the sync status will become **Transfer** on that site - see [Store sync-with options](#).

- In a [syncing](#) system, facility names (customers, suppliers, etc.) can only be created and edited on the primary server. [Patients](#) can be created in any dispensary, including on a sync site. After that, their visibility is controlled on the central server (after they sync there) in the same way as other names, so everything on this tab (including the **All on**, **Copy** and **Paste** buttons) will be read only on a sync satellite.

When a customer / supplier is created, it will only be made visible in:

- its home store (the store that you are logged into when the name is created; see [Home store](#) for details), and
- any other stores *if* their store preference **Names created in other stores not visible in this store** is switched OFF (there's an equivalent store preference for patients, which can be switched OFF to make new patients visible in other dispensary stores) - see [Store preferences](#) for more details.

Photo tab

On this tab you can assign a photo of the customer or supplier and set their world map coordinates. Both of these can be used in reports.



Adding or deleting a Photo

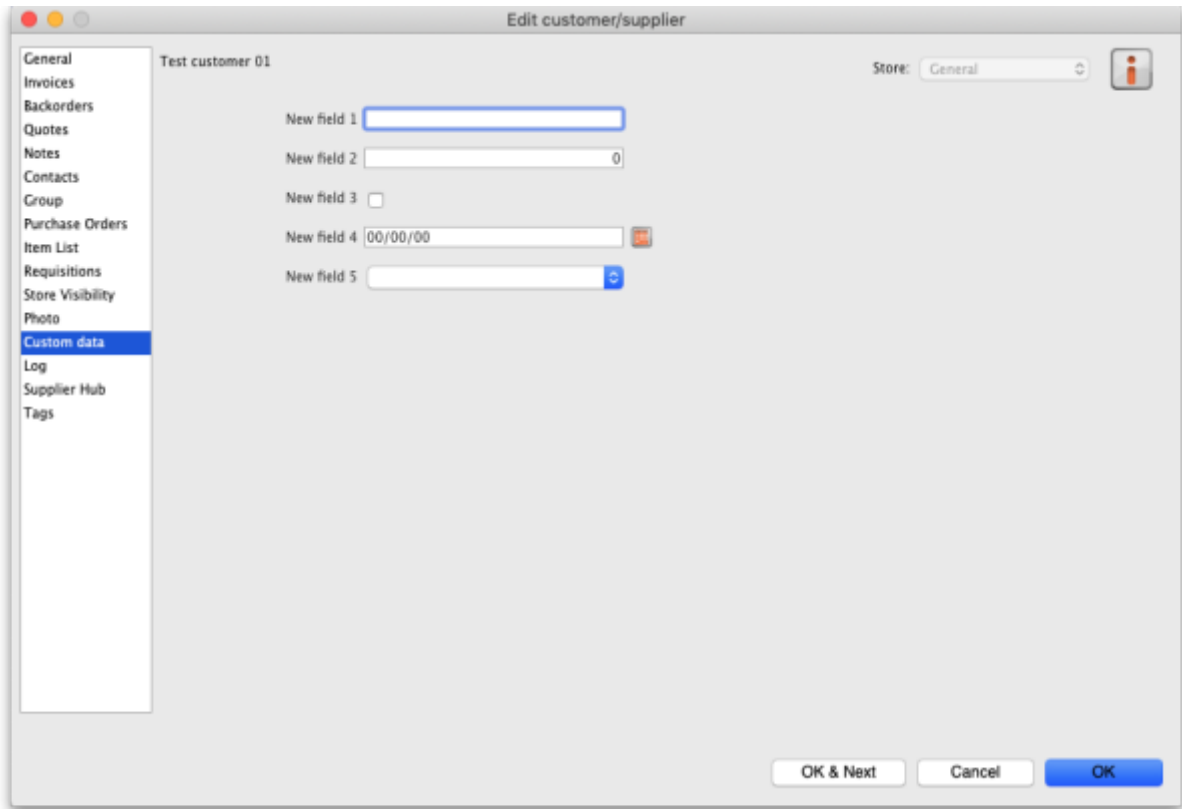
To add a photo, either copy the contents of a file to the clipboard and paste them into the image area or click on the **Add photo** button and select the picture file (png, jpg, bmp or gif files supported).

To delete a photo either click on it in the image area and press the delete key on your keyboard or click on the **Delete photo** button.

Map coordinates

- You can [use Google Maps](#) to find the latitude and longitude coordinates of a customer. The format of the numbers copied from Google maps is “latitude, longitude”.
- Copy these numbers into the **Map coordinates** field and press the *Tab* key on the keyboard. mSupply will copy the Latitude and Longitude numbers to their appropriate **Lat** and **Long** fields below.
- You can also enter the numbers manually into the **Lat** and **Long** fields shown in the screenshot.
- You can then view the customer's location by clicking the **View on Map** button.

Custom data tab



This tab shows all the custom fields that have been set up in the preferences. See the [16.11. Custom fields](#) page for details.

You can edit or enter values in the fields as required. When you click on the **OK** or **OK & Next** buttons the values will be saved.

Log tab

This tab allows you to assign any name tags that you have setup to this name. The table shows a list of all the name tags currently setup in your system. To assign one to this name, simply check the corresponding checkbox in the *Use* column.

If the list of tags is long, you can type something in the **Search tags** field to make the list display tags which contain what you typed only.

Please note: if you assign a tag to a name that is also a store, the tag will be copied to that store's store tags. See the [25.08. Virtual stores](#) page for details on store tags.

See the [5.05. Name tags](#) page for details on how to create and edit name tags.

Import new name codes

If you need to change the name codes for a selection of names, it is a technically challenging process that is easy to get wrong if done manually, especially if you intend to re-use existing codes (not recommended!). Custom code has been developed to do this in bulk. Please contact Sustainable Solutions on support@msupply.foundation to discuss this. Include a link to this heading [Code to](#)

[update Name codes](#) 😊 .

The relevant details are:

- Method: `z_importExcelToUpdateNameCode`
- [mSupply Github issue 13670](#)

Previous: [5. Customers and Suppliers](#) | | Next: [5.02. Contacts](#)

From:

<https://docs.msupply.org.nz/docs/> - **mSupply documentation wiki**

Permanent link:

https://docs.msupply.org.nz/docs/names:adding_and_editing?rev=1736265527

Last update: **2025/01/07 15:58**

