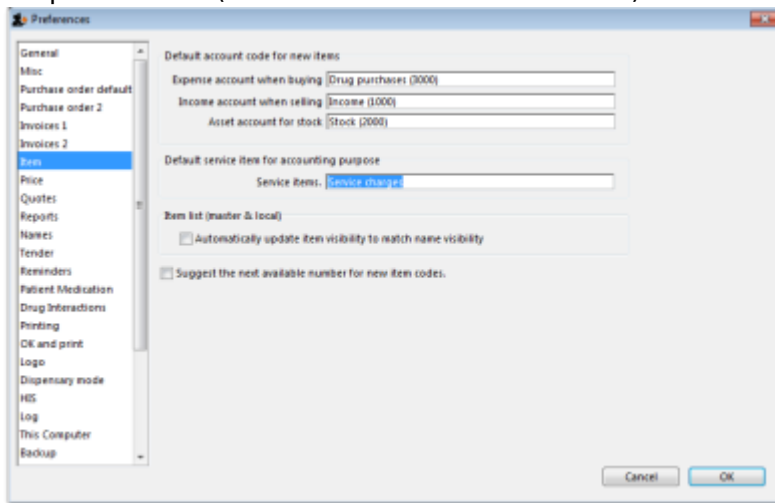


Assigning item codes automatically

- If you want item codes to be assigned automatically, check the checkbox on the items tab of the preferences (**File > Preferences > Items**)



*

From:

<https://docs.msupply.org.nz/docs/> - mSupply documentation wiki

Permanent link:

<https://docs.msupply.org.nz/docs/preferences:items?rev=1307076984>

Last update: **2011/06/03 04:56**

