

Item preferences

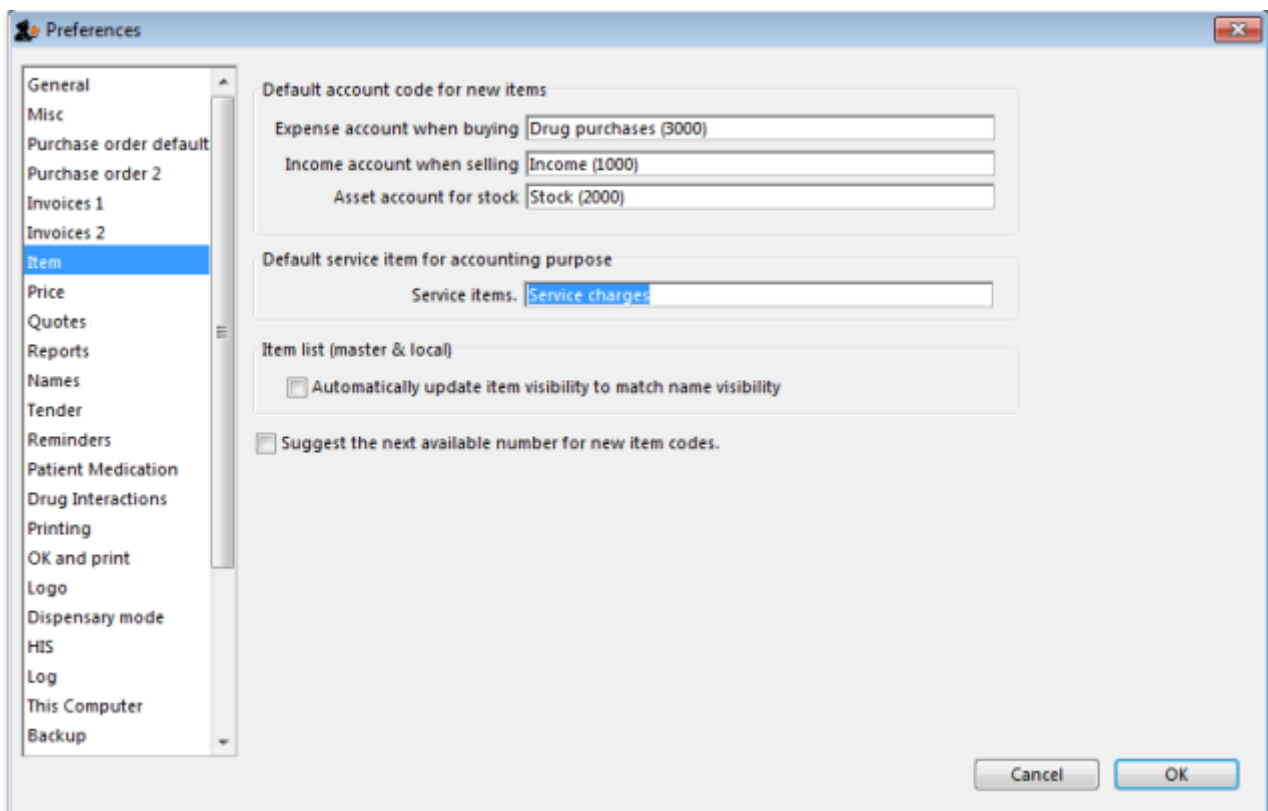
*

Item accounts

- The accounts you enter here will become the default accounts for newly created items.

Assigning item codes automatically

If you want item codes to be assigned automatically, check the checkbox on the items tab of the preferences (**File > Preferences > Items**)



Previous: [Invoices Preferences](#) Next: [Logo](#)

From:
<https://docs.msupply.org.nz/docs/> - mSupply documentation wiki

Permanent link:
<https://docs.msupply.org.nz/docs/preferences:items?rev=1359933533>

Last update: **2013/02/03 23:18**

