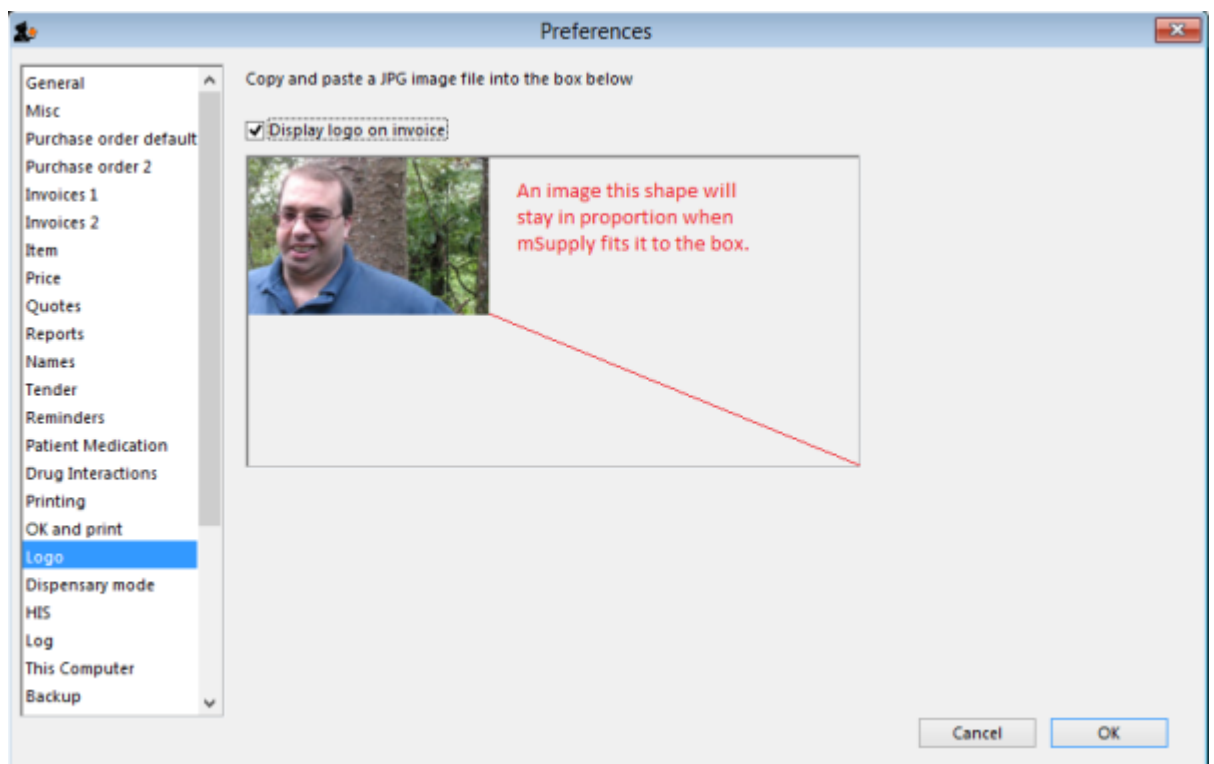
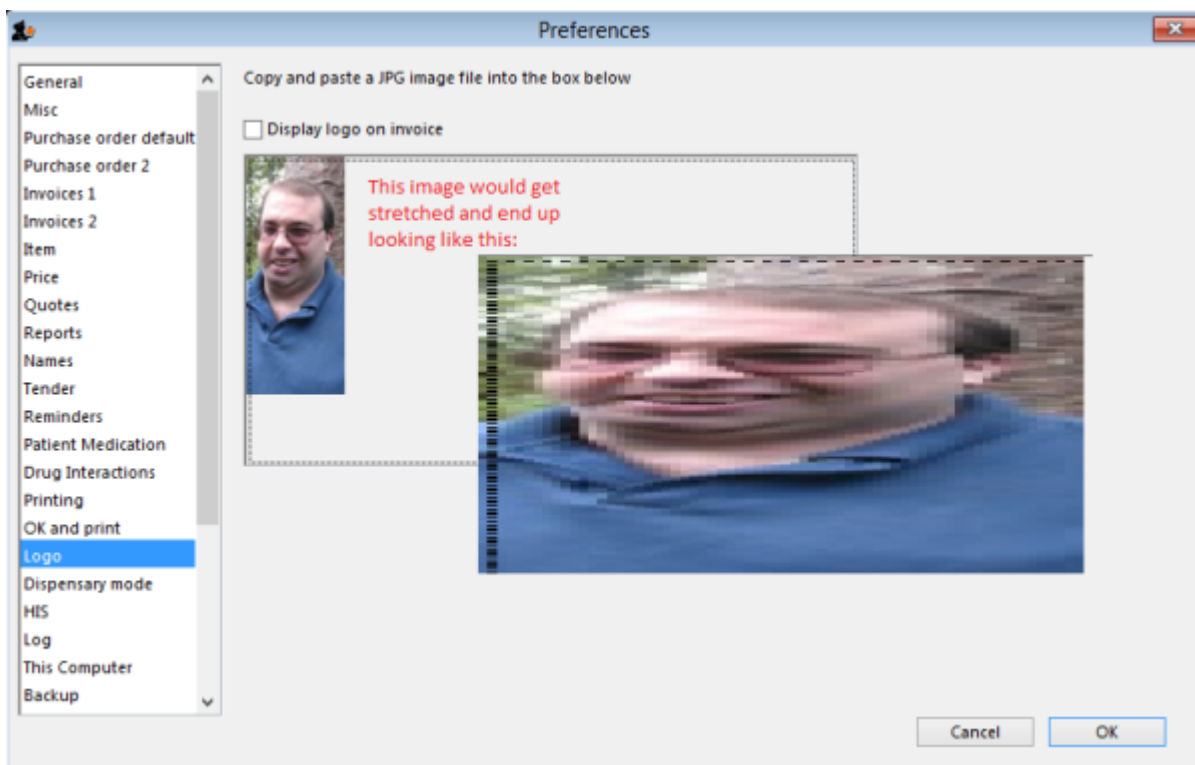


Entering a new Logo

Select *File>Preferences*. On the left hand side choose *Logo*.

If you want this logo to be printed on invoices then tick the box.

Copy your image onto your clipboard (control+c) and paste into the area provided (control+v). Be careful to use an image of the aspect ratio 16:10 (16 wide to 10 high) as mSupply will stretch the image to fill the available area.



Previous: [Entering a New Logo](#) Next: [Entering a New Logo](#)

From:

<https://docs.msupply.org.nz/docs/> - **mSupply documentation wiki**

Permanent link:

<https://docs.msupply.org.nz/docs/preferences:logo?rev=1500414213>

Last update: **2017/07/18 21:43**

