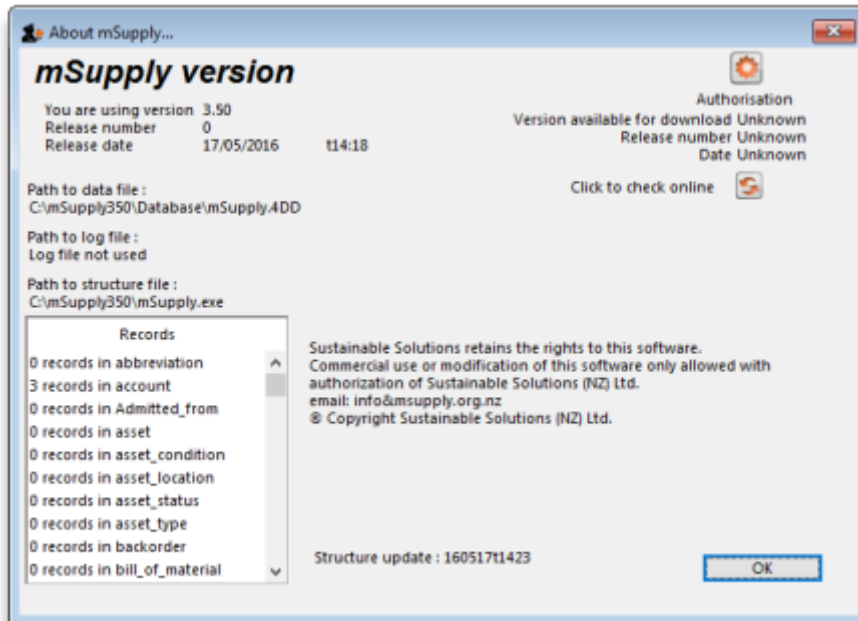


3.03. Opening the example data file

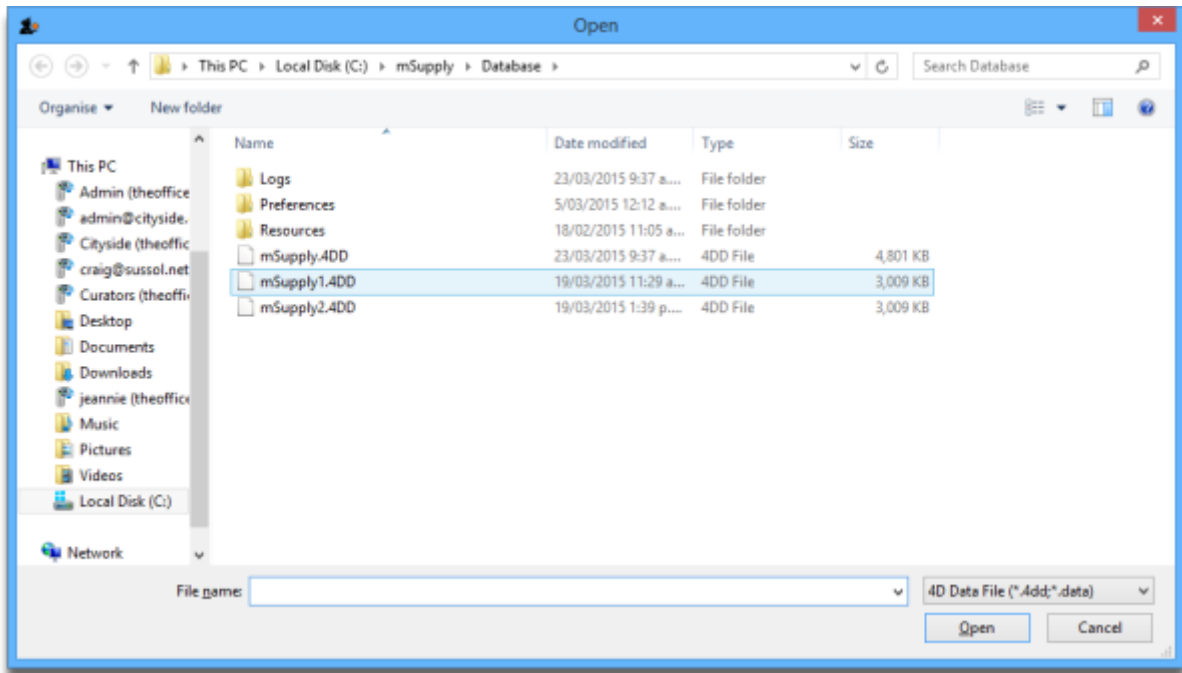
You will have two icons on your desktop - double-click the **mSupply** icon.

If you are opening mSupply® for the first time, the program should automatically open the example data file.

The full path to the data file is displayed, along with other useful information by choosing **Menu > Help > About mSupply**:

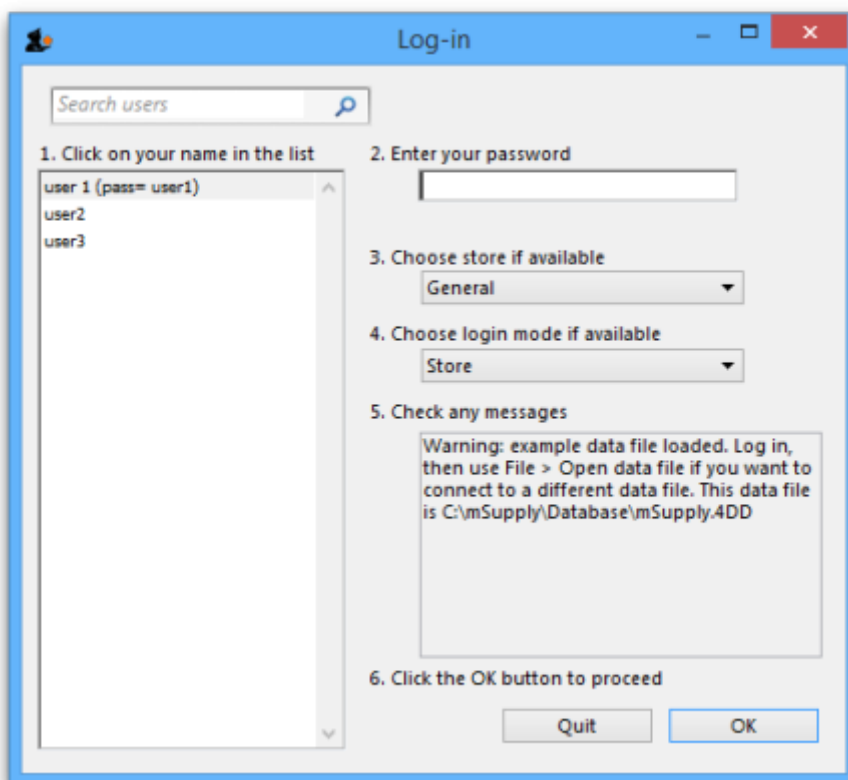


If you have already been using mSupply® and have another data file open, but would like to open the example data file for use with this tutorial, then you can use the mSupply® menu **File > Open data file...** to open the example data file. In Windows, by default the example data folder is stored inside **c:/mSupply/database/**; navigate to the location and open the data file.



If you have chosen a different location from the one suggested by the installer, the example folder will be in your chosen location.

A password entry window is presented as mSupply® opens up a data file. The message panel informs the user that the example data base is in use.



The **“User 1” (pass= “user1”)** entry should be highlighted, but if it is not, it should be selected.

Enter "user1" (without the quotes) at **2.Enter your password.**

The **Choose store** drop-down list will display **General**, and the **Choose login mode ...** drop-down list will display **Store** - these should not be changed. Click the **OK** button. After you have logged on, the Navigator screen appears:

Previous: [3.1. Logging in](#) | | Next: [3.3. Working with lists](#)

From:

<https://docs.msupply.org.nz/docs/> - mSupply documentation wiki

Permanent link:

https://docs.msupply.org.nz/docs/tutorial:opening_example_datafile?rev=1566966221

Last update: **2019/08/28 04:23**

