

Adding an extra mSupply license to the mSupply server

On the mSupply server machine

Once a license has been purchased, Sustainable Solutions will provide you with a file with an "HTML" extension, which the mSupply server will recognize as a license.

Before proceeding, do or check the following.

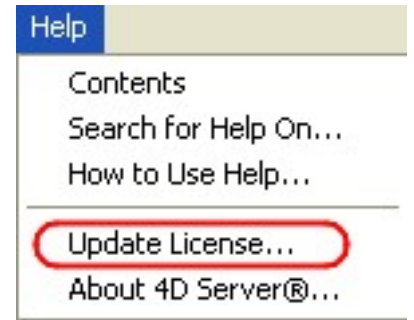
- * Make sure you have the "HTML" license file from Sustainable Solutions.

- * Advise all mSupply client users to disconnect until further notice.

On the mSupply server.

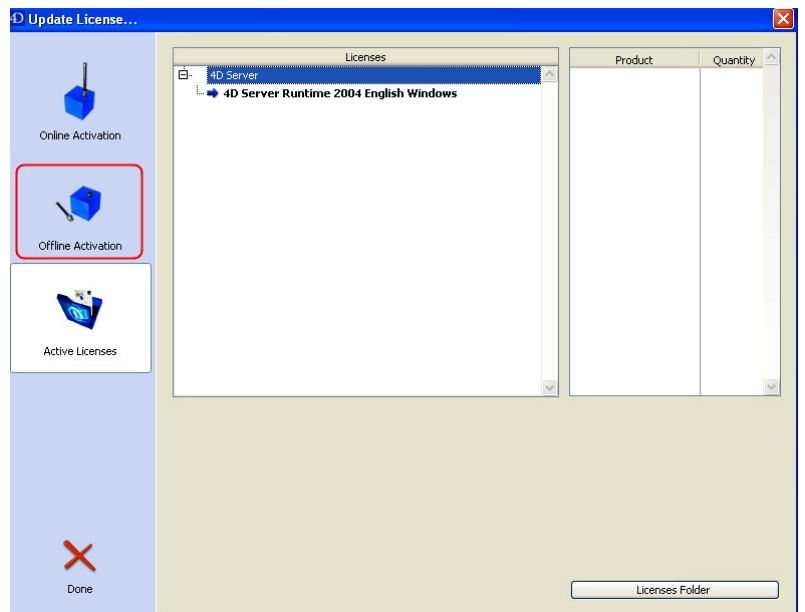
- * Copy the mSupply client license file (HTML file) to the server's desktop.

- * From the server menu : Choose Help > Update License...



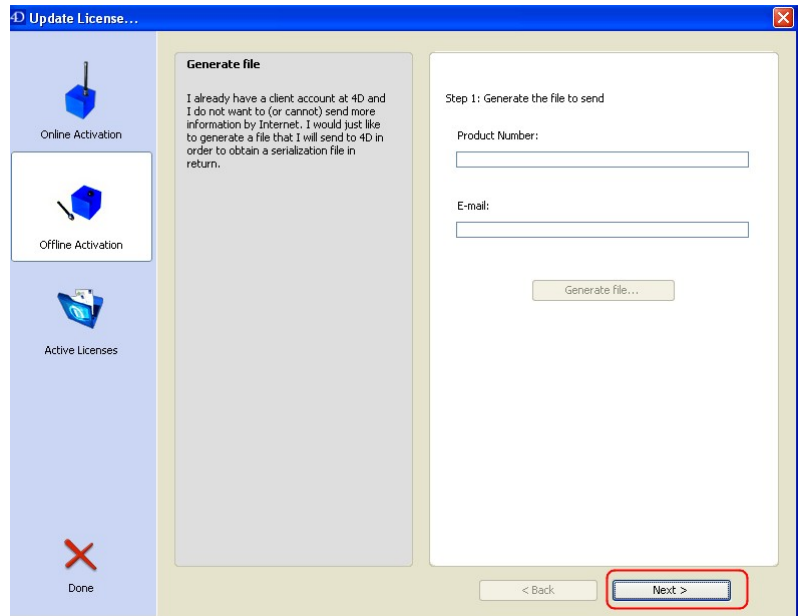
The Update license wizard

The window shows the current licenses that are available to you. To add the extra license do the following :
Click on Offline Activation



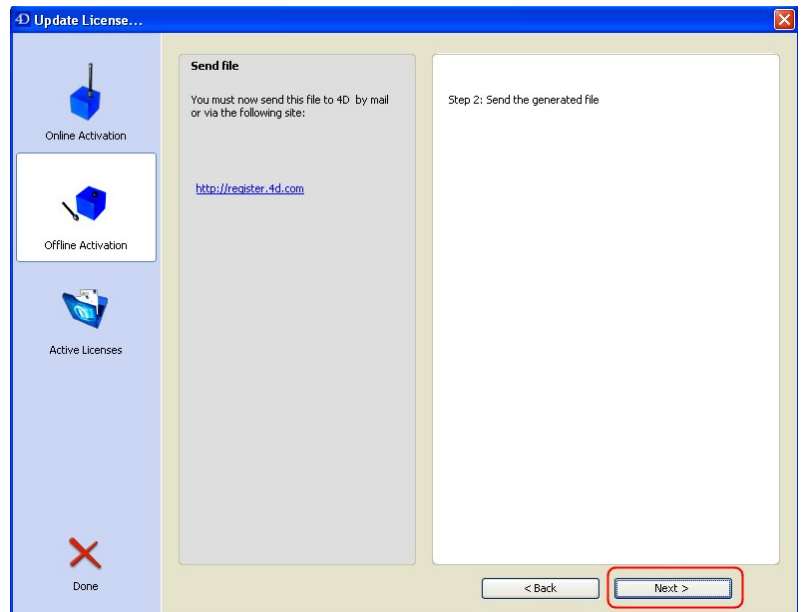
Step 1: Window

This is easy: Ignore this page by clicking the "Next" button.



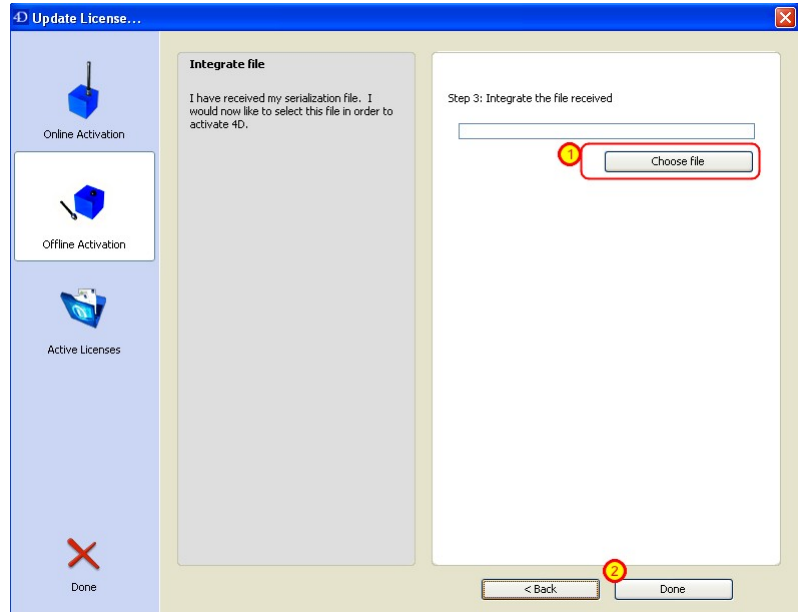
Step 2: Window

Ignore this page by clicking the "Next" button.



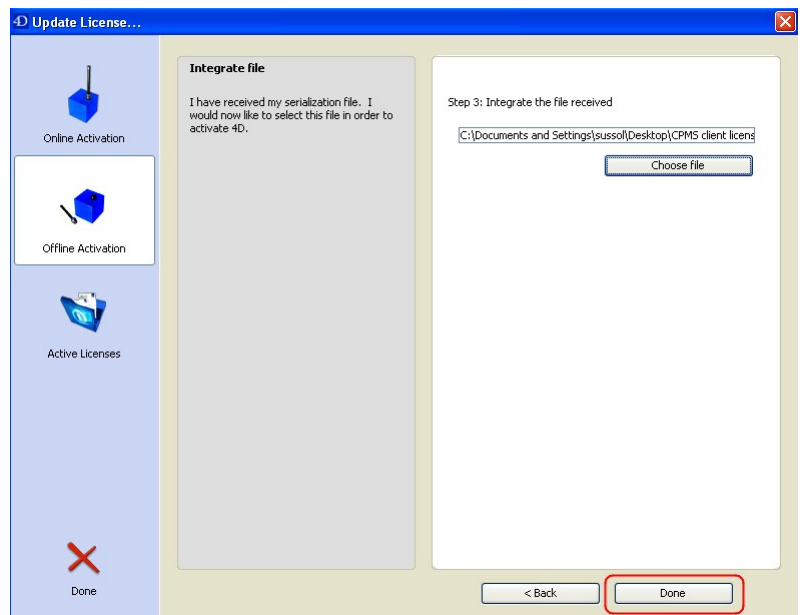
Step 3: Window

Click on the "Choose file" button.
An open/save window will be shown.
Navigate to the location of your new HTML license file (earlier we suggested you save it to the desktop).
Select the file and click open.



License File chosen

Once the HTML file has been selected,
your window should this.
Click on the "Done" button. This should
return you to the server window.



Checking your license

You can confirm the addition of the extra license by doing the following :

From the server menu : Choose Help > Update License...

Click the "Done" button to close the window

Inform your mSupply users that its safe to log on.

Carry out a test to make sure that your extra license is active. Inform Sustainable Solutons if any problems are encountered.

